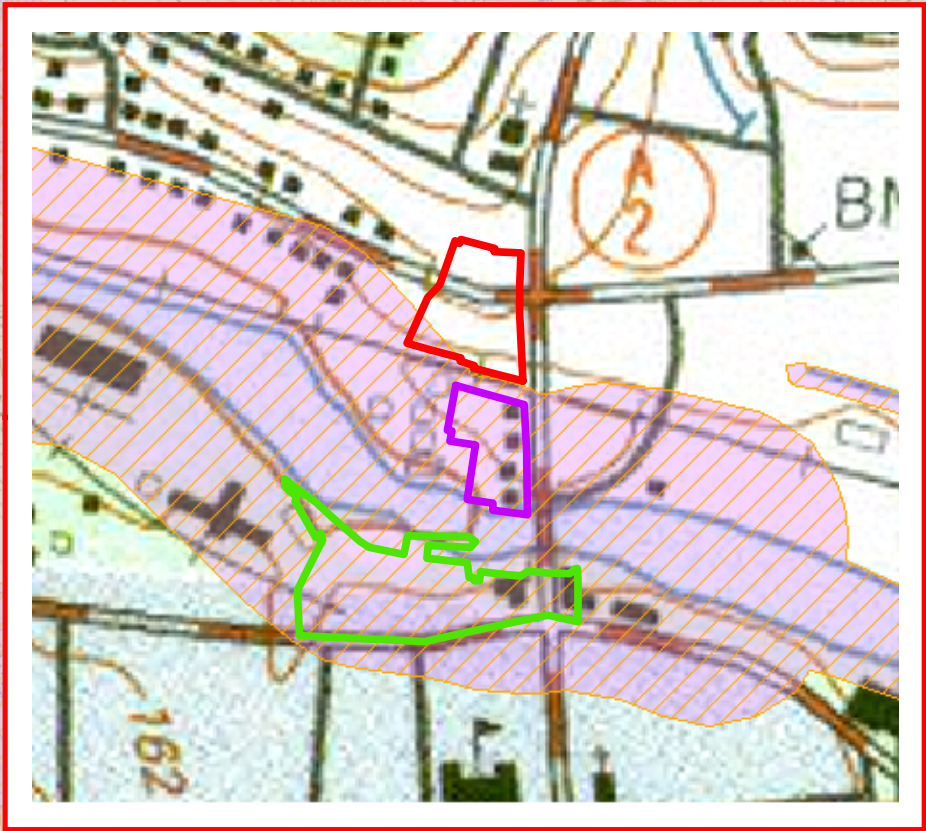


Map 1: Town of Orange

Inset



Inset



Map Sources :
Map Produced by the Franklin Regional Council of Governments Planning Department. GIS data sources include the FRCOG Planning Department, the Massachusetts Highway Department and MassGIS. Digital Data obtained from MassGIS represent the efforts of the Massachusetts Executive Office of Environmental Affairs and its agencies to record information from the sources cited in the associated documentation. EOEA maintains an ongoing program to record and correct errors in the GIS data that are brought to or as to the implied validity of any uses of the GIS data. EOEA maintains records regarding all methods used to collect and process these digital data and will provide this information on request. Executive Office of Affairs, MassGIS EOEA Data Center, 251 Causeway St., Suite 100, Boston, MA, 02114-1000.
Note: Dotted boundaries are approximate and are intended for planning purposes only.
USGS map background provided by MassGIS.
NHESP Priority Habitats for Rare Species
NHESP Estimated Habitats for Rare Wildlife
Natural Heritage and Endangered Species Program areas provided by MassGIS.

- Town Boundary
 - Certified Vernal Pool
 - NHESP Estimated Habitats of Rare Wildlife
 - NHESP Priority Habitats of Rare Species
 - Wetland
 - PDS 1- Putnam Hall Block
 - PDS 2- South Main St. Block
 - PDS 3- West River St. Block
- *PDS - Priority Development Site





**FRANKLIN REGIONAL
COUNCIL OF
GOVERNMENTS**

Main Office: 413-774-3167
425 Main Street
Greenfield, Massachusetts 01301