

# **Appendix**

## **Orange Master Plan**

**Cover Letter for the Orange Community Survey, 2002**

**Highlights of the Community Survey Results**

**Full Community Survey Results**



## **Cover Letter for the Orange Community Survey, 2002**



## ORANGE COMMUNITY SURVEY PLANNING FOR ORANGE'S FUTURE

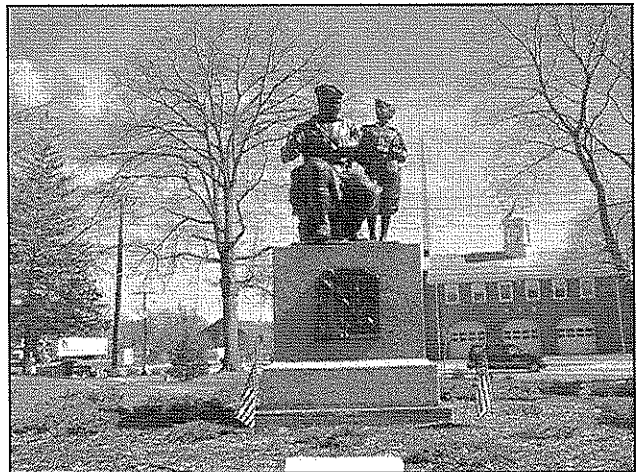
**Dear Orange resident:**

**This survey has been designed to find out what you, the residents of Orange, want for the town's future and what concerns you have.** Over the next few years, the Orange Planning Board and Master Planning Committee would like to create a comprehensive Master Plan for the town. The Master Plan will examine many aspects of the community and will establish recommendations and strategies to help guide the town's future policies and development. The Master Plan will help shape the type of community that Orange will become in the future.

A key aspect of the Master Planning process is involvement and input by residents. This survey is your first opportunity to be a part of this important project, and to have your views and opinions included. The results of the survey will be used to help develop the Master Plan's goals, objectives, and priorities for the community.

All your answers to the survey will remain anonymous, and you do not have to answer any question you would prefer not to. Please answer as many questions as you can and then return the survey.

**The most important thing is that the Master Planning Committee and Orange Planning Board hear from you, and learn about your views on Orange and the issues that you care about most.**



When you are finished with the survey, please mail it to the Orange Planning Board, or drop it off at one of the drop-off boxes located at the Orange Town Hall, the Wheeler Memorial Library, the Moore-Leland Library, and the Hannaford Supermarket. Details about these drop-off locations and their hours are given on the survey's back cover. **Surveys should be returned by Monday, September 16, 2002.**

Thank you for answering and returning the survey. **Your opinion is important and your participation in this process is greatly appreciated!**

Bruce Scherer  
Chair  
Orange Planning Board

Bob Andrews  
Chair  
Orange Board of Selectmen



## **Highlights of the Community Survey Results**





## **HIGHLIGHTS OF THE COMMUNITY SURVEY RESULTS**

Number of surveys delivered:	3,100 (estimated)
Number of surveys returned	362
Response rate	12%

### **Survey Respondents**

- 57% of survey respondents have lived in Orange for 25 years or more.
- 86% own their home.
- 43% of the respondents are between the ages of 45 and 64. 33% are ages 65 or over.
- 30% have children under age 19 living at home.
- 24% of the respondents live alone.

### **Master Plan**

- 81% of survey respondents like the idea of creating a Master Plan for Orange. 12% are unsure.
- Survey respondents' top priorities for topics to be included in the Master Plan are:
  - Economic Development
  - Community Facilities and Services
  - Natural Resources
  - Transportation
  - Land Use and Zoning
- All of the proposed Master Plan topics listed in the survey were rated as very important or important by over two-thirds of respondents.

### **Most Serious Issues Facing Orange**

- The most serious issues facing Orange according to the survey respondents, in order of priority, are:
  - the availability of jobs
  - the revitalization of the downtown
  - the state of the economy
  - crime and vandalism
  - road maintenance
  - the quality of public schools
  - the protection of rural and small town character
  - the preservation of water quality in lakes, ponds, and rivers
  - police and fire protection
  - the preservation of undeveloped, open space areas

### **Most Serious Issues Facing Orange (con't)**

- Job availability is the only issue that was selected as one of the most serious issues by over half (55%) of respondents.

### **Housing**

- The top five housing issues identified by the survey respondents are:
  - property taxes
  - the preservation of rural character in the town's rural areas
  - the condition of current housing
  - the need for programs and funding to assist first-time home buyers
  - the cost of Title 5 septic system upgradesEach of these issues was considered very important or important by at least 60% of respondents.
- Property taxes are considered a very important issue by 66% of respondents.
- 46% of respondents oppose new multi-family development, and 44% oppose new homes on lots smaller than half an acre.

### **Transportation**

- 75% of survey respondents consider road maintenance a very important issue.
- 50% of respondents consider improving traffic safety on Route 2/2A a very important issue.
- 43% of respondents feel that improvements to the road network are one of the most important capital expenditures needed over the next ten years.

### **Parking Supply**

- 67% of respondents oppose constructing a town parking garage in the downtown.
- 61% of respondents favor creating a new off-street parking lot to increase the downtown's parking supply.

### **Recreational Facilities and Activities**

- Of all the facilities listed in the survey, only the public parks are considered to be in excellent or good condition by more than half the respondents.
- There is strong support among respondents for expanded recreational programs and activities. The strongest support is the more programs for teenagers, which 77% of respondents favor.

### **Economic Growth and Development**

- At least 60% of survey respondents support having the following types of businesses downtown:
  - business offices (76%)
  - small to medium retail businesses (64%)
  - restaurants (63%)
  - art and cultural services (60%)
  - tourist services (60%).
- 71% of respondents favor having additional restaurants along busy roads outside of the downtown.
- At least 75% of respondents support having additional manufacturing or light industrial firms in the town's industrial parks.
- Respondents' largest concerns regarding new business development are:
  - the types of businesses that could come to Orange (54%)
  - the appearance of commercial buildings and businesses (52%)
- 77% of respondents favor having incentives to encourage new businesses to locate in the downtown.
- 63% of respondents support having more control over where different types of businesses are located.
- Among respondents' top priorities for additional budget expenditures in Orange are the redevelopment of abandoned/vacant properties, and the promotion of business development.

### **Historic, Scenic, and Natural Resources**

- 81% of survey respondents feel it is very important to protect Public Water Supplies and their recharge areas.
- 79% of respondents support improving regulations to protect wetlands and drinking water quality.
- 65% of respondents support conservation group acquisition of open space, farmland, and forestland parcels to protect this land from development.
- 89% of respondents feel it is very important or important to protect farmland from development.
- 77% of respondents feel it is very important or important to protect residential historic buildings and historic landscapes.
- 82% of respondents consider important or very important to protect and preserve at least types of historic resources. 18% do not.
- 61% of respondents support having a demolition delay bylaw for historic properties.

### **Zoning**

- The primary purposes of zoning that respondents feel it is important for Orange's zoning bylaws to address, in order of priority, are:
  - to separate conflicting land uses
  - to preserve natural resource areas and wildlife habitat
  - to direct residential, commercial, and industrial development to appropriate areas
  - to protect important land such as wetlands and farmland
  - to protect property values

### **Town Services and Expenditures**

- Respondents' top priorities for expanded town services and expenditures over the next ten years are:
  - improvements to the road network
  - the redevelopment of abandoned/vacant properties
  - additional programs or funding to promote business development
  - the expansion of programs to assist homeowners with home repairs and required septic system upgrades and lead paint abatement
  - the acquisition of open space parcels to keep them undeveloped
  - the expansion of police and fire services
  - the expansion of recreational programs and activities
  - improvements to the water and sewer systems
  - the creation of additional housing for elderly or disabled residents
  - the expansion of transit services

## **Full Results of the Community Survey**



## FULL RESULTS OF THE COMMUNITY SURVEY

### MASTER PLAN

*Over the next few years, the Orange Master Planning Committee and Orange Planning Board would like to create a comprehensive Master Plan for the town. The Master Plan will help guide the town's future development and policies. It is very important to find out what topics residents think are most important to include in the Master Plan.*

**Q1. The following list includes topics and issues often addressed in Master Plans. Of these topics, which do you feel are important for Orange to include in its Master Plan? For each topic listed, please mark an X in the appropriate column.**

*Non-respondents for this question: 4%*

		Very important	Important	Not Important	Unsure	No Answer For Subcategory
a.	<u>Housing</u> : assess the current housing stock and what types of new housing or housing programs could help address housing issues	23%	44%	21%	5%	6%
b.	<u>Transportation</u> : take stock of current transportation infrastructure, including roads, transit, and pedestrian and bicycle facilities, and address transportation needs	34%	51%	9%	2%	4%
c.	<u>Community Services and Facilities</u> : evaluate municipal services and facilities, including sewer and water, libraries, emergency services, and recreation facilities and activities	36%	51%	7%	3%	4%
d.	<u>Economic Development</u> : evaluate the types of jobs that are currently available, how to keep those jobs in town, and how to provide new employment opportunities	68%	25%	3%	0%	3%
e.	<u>Historic and Scenic Resources</u> : inventory the town's current historic and scenic resources including buildings and landscapes, and develop recommendations for protecting, preserving, and promoting important historic and scenic assets	24%	51%	17%	3%	5%
f.	<u>Natural Resources</u> : take stock of Orange's natural resources including rivers, wetlands, wildlife habitat, forests, farmland, and open space, and identify ways to protect those resources; this section will build on the recently completed Open Space and Recreation Plan	43%	42%	9%	2%	4%
g.	<u>Land Use and Zoning</u> : evaluate current land use patterns and zoning, and consider how growth should be directed	44%	36%	9%	6%	6%
h.	<u>Capital Improvement Plan</u> : plan for future large facility expansions, renovations, and repairs	31%	39%	16%	5%	8%

**Q2. Do you like the idea of Orange creating a Master Plan which addresses many aspects of your community, and which will help the town develop future priorities and policies? Please circle one.**

*Non-respondents for this question: 14%*

Responses of those who answered this question:

- a. Yes                81%
- b. No                 7%
- c. Unsure            12%

*Note: Reported percentages are based on the number of respondents answering each question (unless otherwise noted).*

### WHAT DO YOU LIKE ABOUT LIVING IN ORANGE?

*This set of questions asks what you like about living here and what the key issues are in Orange today.*

**Q3. How long have you lived in Orange?** *Please circle one.*

*Non-respondents for this question: 2%*

Responses of those who answered this question:

- a. Less than 1 year            3%
- b. 1 to 4 years                10%
- c. 5 to 14 years               15%
- d. 15 to 24 years             15%
- e. 25 years or more          57%

**Q4. Please indicate how important the following items were in your decision to live in Orange.** *For each item listed, please mark an X in the appropriate column.*

*Non-respondents for this question: 3%*

		Very Important	Important	Not Important	No Answer For Subcategory
a.	Rural or small town character	53%	31%	7%	9%
b.	Historic character	11%	32%	41%	17%
c.	Scenic landscapes and views	28%	37%	20%	14%
d.	Quabbin Reservoir	18%	30%	37%	14%
e.	Millers River	13%	30%	41%	16%
f.	Area's lakes and ponds	23%	43%	21%	13%
g.	Recreational opportunities	18%	36%	27%	19%
h.	Arts and cultural activities	10%	30%	41%	19%
i.	Air and water quality	45%	34%	10%	11%
j.	Character of the downtown	17%	37%	26%	20%
k.	Town services	20%	45%	17%	18%
l.	Public school system	34%	31%	20%	16%
m.	Local tax rates	36%	32%	16%	16%
n.	Safety from crime and vandalism	49%	31%	6%	14%
o.	Affordable housing	36%	33%	18%	13%
p.	Job opportunities in the region	28%	34%	22%	17%
q.	Little traffic congestion	28%	40%	17%	15%
r.	Relatives or friends nearby	33%	26%	30%	11%

*Note: Reported percentages are based on the number of respondents answering each question (unless otherwise noted).*



**Q5. What do you think are the five most serious issues facing Orange today?** *Please circle the letters for the five most serious issues in Orange today?*

*Non-respondents for this question: 2%*

83% of respondents selected five issues.

11% of respondents selected less than five issues.

6% of respondents chose more than five issues.

Maximum number of issues selected: 12

Minimum number of issues selected: 1

		% for respondents with 5 answers or less (n = 337)	% for respondents with over 5 answers (n = 21)	% for all respondents (n = 358)
a.	Population growth	21%	29%	22%
b.	Affordable housing availability	21%	29%	21%
c.	Quality of public schools	34%	38%	34%
d.	Police and fire protection	25%	48%	26%
e.	Quality of public transportation services	13%	29%	14%
f.	Traffic safety and congestion on Route 2/2A	22%	5%	21%
g.	Road maintenance	35%	62%	36%
h.	Quality of recreational facilities	9%	14%	10%
i.	State of the economy	39%	24%	38%
j.	Revitalization of the downtown	43%	43%	43%
k.	Availability of jobs	55%	52%	55%
l.	Protection of rural and small town character	30%	48%	31%
m.	Preservation of historic structures	6%	19%	7%
n.	Preservation of undeveloped, open space areas	24%	24%	24%
o.	Protection of air quality	8%	38%	10%
p.	Preservation of water quality in lakes, ponds, and rivers	28%	86%	32%
q.	Protection of groundwater quality	20%	48%	22%
r.	Pollution from light sources	<< 1%	10%	1%
s.	Crime and vandalism	37%	71%	39%

*Note: Reported percentages are based on the number of respondents answering each question (unless otherwise noted).*

## HOUSING

*This group of questions asks about housing issues and new development in Orange.*

**Q6. Please indicate how important each of the following housing issues are in Orange. For each issue listed, please mark an X in the appropriate column.**

*Non-respondents for this question: 3%*

		Very Important	Important	Not Important	Unsure	No Answer For Subcategory
a.	Need for additional elderly housing	19%	35%	24%	13%	9%
b.	Need for additional single-family housing	16%	30%	29%	13%	15%
c.	Need for additional affordable housing	23%	29%	29%	8%	14%
d.	Need for more rental housing	11%	23%	40%	13%	17%
e.	Need for additional multi-family housing	7%	15%	47%	16%	19%
f.	Condition of current housing in Orange	32%	35%	9%	11%	16%
g.	Need for programs and funding to assist first-time home buyers	25%	35%	19%	8%	16%
h.	Need for programs and funding for rehabilitating low income housing	22%	28%	28%	8%	17%
i.	Lead paint exposure and cost of mandated lead paint removal	18%	37%	21%	11%	16%
j.	Cost of mandated Title 5 septic system upgrades	24%	40%	14%	10%	15%
k.	Preservation of rural character in the town's rural areas	39%	31%	13%	5%	15%
l.	Property taxes	66%	23%	4%	2%	8%

**Q7. Please describe any significant housing issues faced by you or your family.**

*Number of respondents for this question: 76 (equal to 21% of all survey respondents)*

*Number of respondents giving each answer shown in parentheses.*

Main responses given:

High property taxes/tax increase (53)

- On fixed income cannot afford tax increase (8)
- Taxes are too high for limited town services provided (4)
- Cannot afford needed repairs because of tax costs (2)

Rent costs/rent increase (10)

Difficult to afford needed home repairs and maintenance (7)

Condition of neighboring properties (7)

Difficult to find affordable home to buy (5)

Utility bills too high (4)

Mortgage costs/ mortgage increase (3)

Need more handicapped accessible housing (3)

Lack of town water or sewer (2)

Lack of weekly trash pickups (2)

Need more street lights (2)

Need a larger house (2)

Income too high for low-income housing assistance, but still can't afford housing costs (2)

*Note: Reported percentages are based on the number of respondents answering each question (unless otherwise noted).*

**Q8. What types of new residential development do you favor for Orange?** For each type of development listed, please mark an X in the appropriate column.

Non-respondents for this question: 8%

		Favor	Oppose	Unsure	No Answer For Subcategory
a.	Single family residential: lots of smaller than ½ acre (currently found in the downtown and along portions of Route 2A (sewered areas only))	30%	44%	17%	9%
b.	Single family residential: ½ to 1 acre lots (currently found near the airport and along Route 202 (sewered areas only))	57%	20%	12%	10%
c.	Single family residential: minimum 1 acre lots (currently found outside of downtown and outside of the airport area)	64%	12%	13%	11%
d.	Single family residential: minimum 2 acre lots (no area in town currently has a minimum lot size of more than 1 acre)	39%	27%	22%	12%
e.	Multi-family residential: more than 2 units per structure	19%	46%	22%	13%
f.	Open Space residential: development in rural areas that maintains a percentage of open space without increasing the density or number of homes	56%	16%	17%	10%
g.	Residential and commercial mix: for example, apartments on the upper floors of commercial buildings	40%	35%	19%	7%

**Q9. In which areas of town, if any, would you support having new multi-family housing (over 2 units per housing structure)?** For each area listed, please mark an X in the appropriate column.

Non-respondents for this question: 10%

		Favor	Oppose	Unsure	No Answer For Subcategory
a.	Adjacent to existing multi-family housing	44%	40%	10%	6%
b.	In existing residential neighborhoods in the downtown	28%	54%	10%	8%
c.	In existing residential neighborhoods away from the downtown	25%	56%	13%	6%
d.	In parts of the downtown that currently have commercial land uses	34%	42%	16%	8%

Note: Reported percentages are based on the number of respondents answering each question (unless otherwise noted).

## TRANSPORTATION

*The following questions deal with transportation issues and services in Orange.*

**Q10. Please indicate how important each of the following transportation-related services are for Orange. For each service listed, please mark an X in the appropriate column.**

*Non-respondents for this question: 2%*

		Very important	Important	Not Important	Unsure	No Answer For Subcategory
a.	Maintaining local roadways	75%	21%	1%	0%	3%
b.	Improving traffic safety on Route 2/2A	50%	35%	8%	2%	5%
c.	Providing and maintaining sidewalks	42%	45%	7%	2%	5%
d.	Providing and maintaining biking trails	18%	36%	31%	5%	9%
e.	Providing and maintaining walking trails	20%	38%	30%	4%	8%
f.	Expanding local bus services	31%	37%	18%	7%	7%
g.	Improving transportation access and services for the elderly and disabled	44%	39%	7%	6%	5%

**Q11. Which of these options would you support to increase the downtown's parking supply? For each option listed, please mark an X in the appropriate column.**

*Non-respondents for this question: 2%*

		Favor	Oppose	Unsure	No Answer For Subcategory
a.	Constructing a town parking garage in the downtown	17%	67%	9%	6%
b.	Creating a new public off-street parking lot	61%	22%	12%	5%
c.	Requiring multi-family dwellings to provide more off-street parking (currently 2 spaces per unit are required)	46%	27%	19%	8%

## RECREATIONAL FACILITIES AND ACTIVITIES

*This set of questions asks about Orange's recreational facilities and activities and what changes and improvements you would like to see in them.*

**Q12. What is your opinion about the following recreational facilities in Orange? For each facility listed, please mark an X in the appropriate column.**

*Non-respondents for this question: 6%*

		Excellent	Good	Adequate	Poor	Unsure	No Answer For Subcategory
a.	Public parks	19%	43%	28%	5%	3%	9%
b.	Playgrounds/Tot lots	12%	37%	31%	8%	8%	10%
c.	Sports fields	12%	36%	35%	6%	7%	10%
d.	Tennis courts	4%	28%	31%	15%	17%	11%
e.	Swimming areas	3%	21%	25%	38%	9%	11%
f.	Hiking trails	4%	18%	31%	19%	21%	13%
g.	Skateboard park	1%	15%	26%	30%	21%	13%

*Note: Reported percentages are based on the number of respondents answering each question (unless otherwise noted).*

**Q13. Would you like to see any changes or improvements in the following recreational activities and programming?** For each activity listed, please mark an X in the appropriate column.

*Non-respondents for this question: 8%*

		Yes	No	Unsure	No Answer For Subcategory
a.	Recreational programs for young children	60%	16%	18%	7%
b.	Recreational programs for teenagers	77%	10%	11%	2%
c.	Recreation programs for seniors	50%	19%	23%	7%
d.	Community events and arts and cultural activities	63%	12%	19%	7%

**Q14. Please describe the main changes or improvements you would like to see in the town's recreational facilities or recreational activities and programming.**

*Number of respondents for this question: 142 (equal to 39% of all survey respondents)*

*Number of respondents giving each answer shown in parentheses.*

Main answers given:

More activities and programs for teenagers (27)  
 Upgrading of Lake Mattawa recreation area facilities and staffing (13)  
 Youth center (9)  
 Better management/monitoring of skate park (8)  
 More summer activities and programs (8)  
 Recreational trail along the Millers River (8)  
 Movie theater (8)  
 Better publicity and information on current programs (7)  
 More activities and programs for children (7)  
 More playgrounds, especially near rental housing (5)  
 Bowling alley (5)  
 Better maintenance of existing parks and facilities (4)  
 Improved recreational opportunities on the Millers River (4)  
 More community events (4)  
 More job opportunities for teens (i.e. work study) (4)  
 Afterschool programs (3)  
 Local live theatre and plays (3)  
 Ice skating rink (3)  
 More cultural events (3)  
 More community service opportunities for teenagers (3)  
 More programs/activities for seniors (3)  
 Better maintenance of tennis courts (3)

*Note: Reported percentages are based on the number of respondents answering each question (unless otherwise noted).*

## ECONOMIC GROWTH AND DEVELOPMENT

*The following questions concern economic growth in Orange, and the potential impacts related to the development of new businesses.*

**Q15. The following table lists various types of industries and businesses. Which types of new industries and businesses would you favor having in Orange, and where do you think they should be located? Please mark an X for all the locations that you would support for each business type.**

*Non-respondents for this question: 6%*

		In Current Commercial Areas of the Downtown	Along Busy Roads Outside of the Downtown	In Existing Industrial Parks	In Current Residential Neighbor- hoods	None of These Areas	Unsure	No Answer for Sub- category
a.	Home-based businesses	26%	24%	15%	46%	2%	16%	15%
b.	Business offices	76%	28%	39%	7%	0%	4%	10%
c.	Small to medium-sized retail businesses: <i>under 10,000 sq ft</i>	64%	43%	27%	4%	2%	3%	13%
d.	Restaurants	63%	71%	12%	7%	1%	3%	8%
e.	Tourist services: <i>for example, a gift shop</i>	60%	50%	9%	7%	5%	5%	13%
f.	Arts and cultural services: <i>for example, a movie theatre or history museum</i>	60%	46%	9%	6%	4%	6%	10%
g.	Recreational services: <i>for example, a private gym or a recreation center</i>	52%	48%	24%	6%	4%	9%	10%
h.	Large retail businesses: <i>over 10,000 sq ft</i>	24%	48%	41%	1%	5%	4%	8%
i.	Small-sized manufacturers: <i>under 25 employees</i>	30%	30%	75%	3%	1%	4%	6%
j.	Medium-sized manufacturer: <i>25 to 100 employees</i>	18%	23%	81%	3%	0%	5%	4%
k.	Light industrial firms: <i>for example, assembly work sites or scientific research laboratories</i>	22%	24%	80%	2%	3%	5%	5%

**Q16. Please identify which of the following potential impacts of new business growth and economic development concern you. Please circle the letters for your top concerns.**

*Non-respondents for this question: 7%*

Responses of those who answered this question:

- |    |  |     |
|----|--|-----|
| a. | Types of businesses that could come to Orange  | 54% |
| b. | Appearance of commercial buildings and businesses  | 52% |
| c. | Demand for more parking spaces in the downtown area  | 32% |
| d. | Creation of new strips of commercial development and activity  | 32% |
| e. | New commercial activity and growth outside of the downtown<br>contributing to a decline in downtown businesses | 29% |
| f. | Negative impacts on the area's natural resources   | 43% |
| g. | Increases in road traffic  | 31% |
| h. | None of the potential impacts of new business growth and<br>economic development concerns me                   | 9%  |

*Note: Reported percentages are based on the number of respondents answering each question (unless otherwise noted).*

**Q17. Would you support any of the following policies or regulations to minimize the potential impacts of new business growth and economic development listed in question 16. For each policy or regulation listed, please mark an X in the appropriate column.**

*Non-respondents for this question: 6%*

		Favor	Oppose	Unsure	No Answer For Subcategory
a.	More control over where different types of businesses are located	63%	16%	14%	8%
b.	Require businesses to provide more off-street parking than under current regulations	51%	13%	22%	13%
c.	More control over the types and design of commercial signs	38%	26%	24%	12%
d.	More control over the design of commercial sites including the location and landscaping of parking areas, lighting, types of signage, and building materials	50%	23%	18%	9%
e.	Incentives to encourage new businesses to locate in the downtown	77%	9%	8%	6%

### **HISTORIC, SCENIC AND NATURAL RESOURCES**

*This set of questions asks about Orange's historic, scenic, and natural resources and what efforts you would support to protect them.*

**Q18. How important is it to you to preserve and protect the following historic resources? For each resource listed, please mark an X in the appropriate column.**

*Non-respondents for this question: 9%*

		Very Important	Important	Not Important	Unsure	No Answer For Subcategory
a.	Residential historic buildings	34%	43%	19%	3%	1%
b.	Commercial and industrial historic buildings	17%	43%	30%	6%	4%
c.	Government and institutional historic buildings	26%	44%	21%	5%	4%
d.	Historic neighborhoods and districts	27%	43%	20%	6%	5%
e.	Historic landscapes	37%	40%	13%	6%	4%

*Note: Reported percentages are based on the number of respondents answering each question (unless otherwise noted).*

**Q19. At present, Orange has no zoning bylaws or other regulations to preserve the historic character of downtown Orange and North Orange. What types of regulations or guidelines would you favor for the town's historic areas and historic structures? For each item listed, please mark an X in the appropriate column.**

*Non-respondents for this question: 9%*

		Favor	Oppose	Unsure	No Answer For Subcategory
a.	Voluntary architectural guidelines for renovations, rehabilitation, and new construction in historic areas	56%	16%	16%	12%
b.	Mandatory architectural guidelines and a design review process in historic areas	43%	27%	19%	10%
c.	Restrictions on the types of uses allowed in historic areas	54%	20%	19%	7%
d.	Demolition delay bylaw: <i>property owners would be required to wait before tearing down a historic structure so that alternatives to demolition can be explored</i>	61%	19%	15%	6%

**Q20. How important is it to you to preserve and protect the following scenic and natural resources? For each resource listed, please mark an X in the appropriate column.**

*Non-respondents for this question: 6%*

		Very Important	Important	Not Important	Unsure	No Answer For Subcategory
a.	Farmland	61%	27%	6%	2%	4%
b.	Ridges	31%	32%	15%	12%	11%
c.	Geological formations	33%	34%	13%	11%	9%
d.	Scenic roads	42%	39%	9%	3%	7%
e.	Scenic landscapes and views	46%	35%	8%	2%	8%
f.	Public Water Supplies and their Recharge Areas ( <i>areas where surface water moves down into the underground drinking water supply</i> )	81%	16%	1%	0%	2%
g.	Private wells	56%	27%	3%	5%	9%

**Q21. Which issues are important to you with respect to the following natural resources? For each resource listed, please mark an X for each issue that is important.**

*Non-respondents for this question: 9%*

		Public access for recreation	Recreational facilities (e.g. trails, beaches, boat launch area)	Habitat preservation	Water quality protection	None of these	Unsure	No Answer For Subcategory
a.	Millers River	57%	45%	47%	66%	1%	4%	5%
b.	Tully River	45%	36%	46%	59%	2%	7%	10%
c.	Other rivers and streams	34%	24%	46%	57%	1%	8%	14%
d.	Lake Mattawa	66%	58%	41%	66%	1%	2%	2%
e.	Tully Pond	45%	38%	43%	56%	1%	8%	10%
f.	Other ponds	60%	46%	9%	6%	4%	6%	10%
g.	Wetlands	14%	11%	63%	41%	3%	10%	12%
h.	Forested areas	28%	23%	67%	32%	2%	8%	8%
i.	Open space areas	24%	16%	55%	28%	4%	14%	13%

*Note: Reported percentages are based on the number of respondents answering each question (unless otherwise noted).*



**Q22. As property values increase and populations grow, there can be increasing development pressures on farmland, forestland, and open space areas? Which of the following measures would you support to help these areas remain undeveloped? For each measure listed, please mark an X in the appropriate column.**

*Non-respondents for this question: 8%*

		Favor	Oppose	Unsure	No Answer For Subcategory
a.	Town acquisition of open space, farmland, and forestland parcels	43%	32%	13%	13%
b.	Conservation group acquisition of open space, farmland, and forestland parcels	65%	17%	11%	7%
c.	Town financial contribution to help farmers permanently preserve their properties as farmland	51%	26%	19%	4%
d.	Establishment of a water-sewer service area boundary beyond which water and sewer lines will not be expanded ( <i>this will help promote new development primarily within the boundary area</i> )	48%	19%	26%	7%
e.	Improvements to regulations to protect wetlands and drinking water quality	79%	8%	8%	4%
f.	Encouraging use of the Open Space Development bylaw by developers ( <i>this town bylaw supports cluster patterns of development which maintain a percentage of open space without increasing the density or total number of homes</i> )	58%	15%	20%	7%

### ZONING AND LAND USE

*The following questions deal with zoning and its function.*

**Q23. Which of the following general purposes of zoning do you think it is important for Orange's zoning bylaws to address? Please circle the letter for each function of zoning that Orange should address in its bylaws.**

*Non-respondents for this question: 9%*

Responses of those who answered this question:

- |   |     |
|---|-----|
| a. To direct residential, commercial and industrial development to appropriate areas  | 70% |
| b. To identify which land uses are suitable for the community   | 42% |
| c. To protect property values   | 65% |
| d. To separate conflicting uses: <i>for example, keeping residences and heavy industry apart</i>  | 75% |
| e. To combine complementary uses: <i>for example, encouraging the creation of a village center where homes and retail and service businesses are in the same area</i> | 43% |
| f. To preserve the town's current character   | 33% |
| g. To protect important land such as wetlands and farmland  | 66% |
| h. To preserve natural resource areas and wildlife habitat  | 71% |

*Note: Reported percentages are based on the number of respondents answering each question (unless otherwise noted).*

**Q24. Do you have any suggestions for changes to Orange's current zoning bylaws? If so, please describe.**

*Number of respondents for this question: 54 (equal to 15% of all survey respondents)*

*Number of respondents giving each answer shown in parentheses.*

Main answers given:

- Increase the minimum lot sizes in some residential areas (7)
- Don't know enough about the current bylaws to comment (6)
- Do not make zoning bylaws too strict; allow them to be flexible (5)
- Allow some types of small businesses in residential areas (3)
- Limit mobile home areas/do not allow them in residential areas (3)
- Limit future development to protect natural resources (3)
- Have fewer restrictions on business development (in some areas) (3)
- Strengthen current regulations for property maintenance (3)
- Enforce existing bylaws and regulations (2)
- Encourage cluster zoning (2)

*Note: Reported percentages are based on the number of respondents answering each question (unless otherwise noted).*

### TOWN SERVICES AND CAPITAL IMPROVEMENTS

*Until this point, the focus of the survey has been on assessing the town's current resources including its economic, housing, transportation, recreation, and natural resources. This section builds upon the earlier sections and asks you to identify which town services and improvements should receive priority for future funding given the town's current strengths and issues.*

**Q25. Which of the following expanded services or improvements do you think are the most important to include in the town budget over the next ten years? Please circle the letters for your top five priorities.**

*Non-respondents for this question: 8%*

57% of respondents selected five issues.

23% of respondents selected less than five issues.

21% of respondents selected more than five issues.

7% of respondents selected more than ten issues.

Maximum number of issues selected: 22

Minimum number of issues selected: 1

		% for respondents with 5 answers or less (n = 265)	% for respondents with over 5 answers (n = 67)	% for all respondents (n = 332)
a.	Additional housing for elderly or disabled residents	19%	42%	23%
b.	Additional housing for young families	11%	40%	17%
c.	Expansion of programs to assist homeowners with home repairs or required lead paint abatement or septic system upgrades	35%	64%	41%
d.	Expansion of transit services	18%	49%	24%
e.	Improvements to the existing road system	43%	61%	47%
f.	Expansion of the Orange Municipal Airport	14%	24%	16%
g.	Renovations and improvements to Town Hall	6%	27%	10%
h.	Expansion of Town Hall services (for example, hours and staffing)	8%	27%	12%
i.	Renovation of Town-owned buildings to increase accessibility for disabled residents	6%	37%	12%
j.	Expansion of library facilities	17%	31%	20%
k.	Expansion of library services (for example, hours and staffing)	13%	30%	17%
l.	Expansion of police and fire department services	22%	48%	27%
m.	Additional school renovations	12%	25%	15%
n.	Expansion of recreational programs and activities	25%	52%	30%
o.	Additional arts and cultural programs and activities	17%	42%	22%
p.	Creation of additional parks and recreation areas	15%	31%	18%
q.	Improved public access to natural resource areas (for example, lakes and rivers)	17%	43%	22%
r.	Improvements to the existing water and sewer systems	21%	36%	24%
s.	Expansion of the water and sewer systems to additional areas	17%	27%	19%
t.	Additional funding or programs to promote business development	40%	58%	43%
u.	Acquisition of open space parcels to keep them undeveloped	27%	27%	27%
v.	Acquisition of vacant or abandoned properties for redevelopment	40%	76%	47%

*Note: Reported percentages are based on the number of respondents answering each question (unless otherwise noted).*

### TELL US ABOUT YOURSELF

*This set of questions asks you for some information about yourself. These answers help to verify that the residents who fill out the survey are representative of the community as a whole. All your answers to the survey will remain completely anonymous and you may skip any question that you would rather not answer.*

**Q26. How old are you? Please circle one.**

*Non-respondents for this question: 5%*

Responses of those who answered this question:

- a. 19 years of age or younger 0%
- b. 20 – 29 years of age 3%
- c. 30 – 44 years of age 21%
- d. 45 – 64 years of age 43%
- e. 65 – 84 years of age 31%
- f. 85 years of age or older 2%

**Q27. How many people in your household are in each of the following age groups? Please write in the number of household members in each age group.**

*Non-respondents for this question: 9%*

Age Group	% of respondents with this number of people in age group in household				
	0	1	2	3	4
0-19	70%	15%	11%	3%	2%
20-29	86%	9%	5%	0%	0%
30-44	71%	15%	14%	0%	0%
45-64	53%	23%	25%	0%	0%
65-84	65%	21%	14%	0%	0%
85 and over	95%	4%	1%	0%	0%

Total household size	
1	24%
2	44%
3	12%
4	14%
5	4%
6 or more	2%

**Q28. Which part of Orange do you live in? Please circle one.**

*Non-respondents for this question: 8%*

Responses of those who answered this question:

- a. Downtown 36%
- b. North Orange 10%
- c. Tully area 6%
- d. Lake Mattawa area 11%
- e. Other 37%

**Q29. Do you own or rent your home in Orange? Please circle one.**

*Non-respondents for this question: 5%*

Responses of those who answered this question:

- a. Own 86%
- b. Rent 14%

*Note: Reported percentages are based on the number of respondents answering each question (unless otherwise noted).*

**Q30. How much land, if any, do you own in Orange?** *Please circle one.*

*Non-respondents for this question: 6%*

Responses of those who answered this question:

a. None	19%
b. Less than 1/2 acre	14%
c. 1/2 acre to less than 2 acres	40%
d. 2-10 acres	16%
e. 11-25 acres	4%
f. More than 25 acres	9%

*Note: Reported percentages are based on the number of respondents answering each question (unless otherwise noted).*