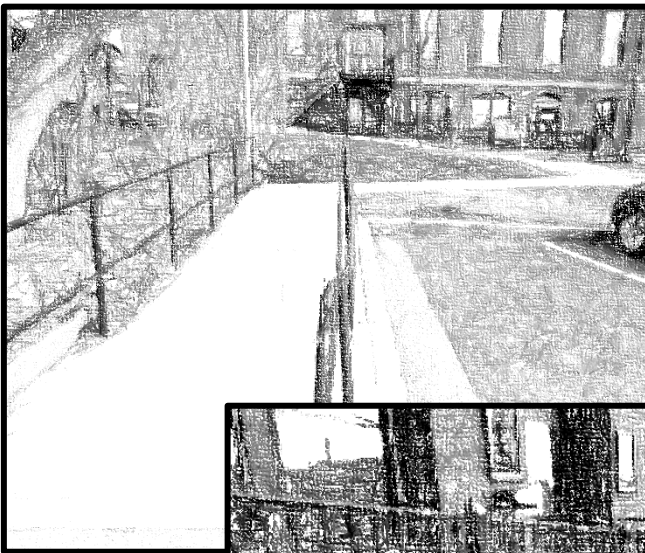


ADA Self-Evaluation and Transition Plan

For the Town of Orange

June 2020

Prepared by the Franklin Regional Council of Governments



Page left intentionally blank.

Table of Contents

Part A – Introduction	4
Recent Progress.....	5
Methodology.....	5
Part B – Evaluation of Non-Discriminatory Policies and Practices	6
Introduction.....	6
Analysis	6
Part C – Evaluation of Facilities and Infrastructure	10
Introduction.....	10
Analysis of Building Accessibility	10
Program Accessibility	16
Sidewalk Accessibility	17
Part D – ADA Transition Plan	18
Appendix A – 2019 Complete Streets Prioritization Plan	
Appendix B – Summary of Responses by Town Departments’ Checklists	
Appendix C – Photos of Transition Plan Issues	

Prepared by the:



12 Olive Street, Greenfield, MA 01301
(413) 774-3167

Page left intentionally blank.

Part A – Introduction

The Town of Orange hired the Franklin Regional Council of Governments (FRCOG) to conduct a comprehensive evaluation of the Town's compliance under Title II of the Americans with Disabilities Act (ADA), which prohibits discrimination on the basis of disability. Specifically, Title II requires that:

No qualified individual with a disability shall, on the basis of disability, be excluded from participation in or be denied the benefits of the services, programs, or activities of a public entity, or be subjected to discrimination by any public entity [35 CFR Part 35.130 (a)].

Title II of the ADA applies to state and local governments, while Title III of the ADA applies to the private sector such as business and non-profit organizations.

In 2020, the Town of Orange secured a grant from the Massachusetts Office on Disability and hired the FRCOG to conduct the ADA Self-Evaluation and prepare an ADA Transition Plan. The FRCOG assessed all Town-owned buildings, parks, and sidewalks as well as the Town's programs, services, and activities to determine their accessibility to people with disabilities.

Like many communities in Massachusetts, Orange is faced with a number of aging municipal buildings and facilities that may pose obstacles to residents with disabilities. The cost and work that is required to remove these barriers and bring them into compliance can be overwhelming to smaller communities with limited financial resources like Orange. The Town has a total population of 7,680 residents, of which 14.9% have incomes below the Poverty Level. This ADA Self-Evaluation and accompanying Transition Plan makes this daunting task a bit easier by identifying the issues, prioritizing them, and sorting out the high cost actions from the simpler, less expensive tasks.

Title II of the ADA sets administrative requirements on state and local governments and also requires that all Town's programs, services, and activities be accessible to people with disabilities. Part B of this document summarizes the findings regarding the administrative requirements and access to programs, activities, and services. Part C discusses the evaluation and findings of the physical facilities owned by the Town of Orange. Part D is the ADA Transition Plan, which catalogs all accessibility issues of the Town facilities that were found during the evaluations and recommends potential solutions. These recommendations have been prioritized, given an estimated timeframe, and assigned relative costs and responsible departments.

Recent Progress

Orange has been proactive in implementing ADA improvements. These include both large and small projects. Below is a summary of some of the projects that the Town has completed to upgrade its facilities:

- Designated an ADA Coordinator;
- Applied for grant funding to renovate the Wheeler Memorial Library to be ADA Compliant;
- Applied for grant funding to increase accessibility in the elementary schools of Dexter Park and Fisher Hill; and
- Installed accessible street crossings and repaired sidewalks.

Methodology

To conduct the ADA Self-Evaluation of the Town's programs, services, and activities, the FRCOG staff distributed checklists designed by the New England ADA Center (a project of the Institute for Human Centered Design) to all Department Heads at an all-Department staff meeting that assessed three requirements of Title II of the ADA for each Department's programs and services:¹

- Effective Communication practices
- General Nondiscrimination practices
- Website accessibility

The FRCOG also used the latest 2010 ADA Standards for Accessible Design (ADAAG 2010) to evaluate all of the Town's buildings.

¹ Self-Evaluation Form Checklists from the New England ADA Center, <https://www.adaactionguide.org/resources#faq>.

Part B – Evaluation of Non-Discriminatory Policies and Practices in Programs, Services, and Activities

Introduction

Title II of the ADA also places administrative requirements on local governments in addition to ensuring the accessibility of the Town's programs, activities, and services. These administrative requirements include the appointment of a Town ADA Coordinator, the creation of a public notice regarding nondiscrimination policies, and the adoption of a complaint procedure. The FRCOG staff, with the assistance of Orange staff, evaluated the Town's compliance with these administrative requirements as well as the Town's policies related to nondiscrimination, effective communication, and website accessibility.

The findings of this evaluation are discussed in this section along with recommendations to ensure compliance with Title II of the ADA.

Analysis

The FRCOG evaluated each of Orange's Departments and the overall Town governance with regard to accessibility requirements. Checklists from the New England ADA Center were provided to each Department Head to complete that evaluated a Department's policies related to General Nondiscrimination, Effective Communication, and Website Accessibility. The findings of these completed checklists are summarized below and recommendations are provided to ensure that people with disabilities are provided the same opportunities as others to participate in programs, services, and activities in the Town of Orange.

1. Designation of Responsible Employer

Title II of the Americans with Disabilities Act requires that a local government designate a responsible employee to coordinate compliance with the ADA and ensure that there is a person at the Town who is knowledgeable with the many requirements of the ADA. The Town of Orange has met this requirement by designating Gabriel Voelker, the Town Administrator, as the ADA Coordinator.

2. Complaint Procedures

In addition to designating an ADA Coordinator, a local government is required to provide a complaint procedure that offers ways for people to file complaints alleging discrimination on the basis of disability with regard to employment or in the provision of services, activities, and programs. Orange has not yet created a formal “ADA Complaint Procedure.”

It is recommended that the Town create a complaint procedure that outlines how a person can contact the ADA Coordinator, a detailed description of the procedure for submitting a complaint, and the reasonable time frames for review and resolution of the complaint that a person filing a complaint may expect.

3. Notice

Title II also requires that a local government provide public notice of the provisions of the ADA to members of the public that may participate in the Town’s program, services, and activities. The Town of Orange has not yet created a Notice of Nondiscrimination.

It is recommended that the Town create one that states Orange’s obligations under the ADA and includes procedures for persons with a disability to contact the Town should they require an auxiliary aid or services for effective communication, or a modification of policies or procedures to participate in a program, service, or activity of the Town. The Town should post the Notice to their website and at all municipal buildings.

4. Effective Communication

Under Title II of the Americans with Disabilities Act, the Town must communicate effectively with people who may have hearing, vision, or speech disabilities. To do so, this may require Orange to provide auxiliary aids and services to meet its responsibility of effective communication. This may include, but is not limited to: providing sign language interpreters, Computer-Assisted-Real-time-Translation (CART), written materials for persons who are deaf or have difficulty hearing, Braille or large print information in digital format for people who are blind or have difficulty seeing.

All Town of Orange Department Heads completed checklists from the New England ADA Center that evaluated each department’s practices and policies regarding their knowledge and ability to provide effective communication for their programs, services, and activities to allow equal participation for persons with disabilities. The completed checklists show that Town staff are willing to comply with Title II, but do not know how to do so in all elements of practice. In particular, most staff members do not know:

- how to go about arranging for different types of auxiliary aids and services to provide for effective communication when needed;
- if there is a policy or procedure for handling requests for auxiliary aids; or
- what the procedure is for determining when the provision of an auxiliary aid or service is an undue financial or administrative burden.

Appendix B provides a summary of the answers to the checklist's questions regarding effective communication practices.

To ensure that Town staff comply with Title II, it is recommended that Orange develop and distribute clear procedures for employees as to how to arrange for auxiliary aids and services. A written informational handout on Effective Communication Procedures will help staff understand their responsibilities and clarify what to do in the event a person needs assistance with communication.

5. Reasonable Modifications of Policies, Practices, and Procedures

Title II of the ADA also requires that local governments ensure that people with disabilities have an equal opportunity to participate in the services, programs, and activities that the Town provides. This may require that the Town of Orange provide "reasonable modifications" to policies and practices to allow equal participation. When applying to Town staff, this requirement may include modifying work schedules; job restructuring; and making facilities used by employees readily accessible to an employee with a disability. When applying to members of the public to be able to participate in a program, service, or activity, this requirement may include allowing service animals in locations where animals are not typically permitted; allowing the use of motorized devices in places where they are not allowed; or providing assistance with application completion.

The results of the completed checklists from the Town's Department Heads show that with respect to the general nondiscrimination requirements of Title II, Orange staff members are very willing to comply and have a good, general understanding of the many responsibilities and requirements that they have as a local government. However, there are topics with which Department staff could be more familiar. For example, some departments do not know the details of how people with service animals can be treated, such as appropriate questions that can be asked and whether an animal can be removed. Appendix B provides a summary of the answers to the checklist's questions regarding general nondiscrimination practices.

A written and distributed summary of nondiscrimination policies will help staff ensure that all participants have the opportunity for equal participation.

6. Website Accessibility

Title II of the Americans with Disabilities Act requires that local governments ensure that, when viewed in their entirety, the programs, services, and activities offered are equally available to people with disabilities. Websites of a local government are considered to be a “program” and should be accessible to the standards of the Web Content Accessibility Guidelines 2.0 AA or Section 508 Standards.

To evaluate the Town of Orange’s websites, a checklist was sent to each Department that maintained its own website or had website administrative privileges. The completed checklists show that the three staff members who have administrative rights are not aware of website accessibility standards and were not sure if the webpages have been updated and tested for compliance with the latest standards. They would like a policy to clarify this and to help make sure that future content is accessible.

Orange should develop a written policy stating that the Town websites should be accessible to ensure that existing and future staff members who have website administrative privileges maintain the accessibility of the website. In addition, staff should be provided guidance about the requirements of the Web Content Accessibility Guidelines 2.0 AA. It would also be very helpful to the Town if people with disabilities who use screen reading software and other assistive technology periodically evaluate the website.

The FRCOG assessed the main Town of Orange Website (www.townoforange.org) in the free Web Accessibility Evaluation Tool (WAVE), which evaluates web content for accessibility under the Web Content Accessibility Guidelines. The results show that there are some errors on the website and many warnings that could prevent or hinder visually-impaired individuals from fully accessing the Town’s website. Fortunately, many can be easily fixed with simple actions, such as changing the color of backgrounds or providing alternative text for images.

Part C – Evaluation of Facilities and Infrastructure

Introduction

FRCOG staff evaluated all Town-owned buildings and facilities for this ADA Self-Evaluation between February and March of 2020 according to the 2010 ADA Standards. These include the following facilities:

Facilities owned by the Town of Orange

- Airport
- Armory
- Athol-Mahar Playing Fields
- Bicentennial Park
- Butterfield Park
- Butterfield School
- Cemeteries
- Dexter Park School
- Fisher Hill School
- Tully Fire Station 2
- Orange Center Fire Station 1
- Goddard Park
- Highway Garage
- Lake Mattawa
- Moore-Leland Library
- Muzzey Field
- Police Station
- Riverside Park
- Town Hall
- Transfer Station
- Veteran's Memorial Park
- Water Department
- Wastewater Treatment Facility
- Wheeler Memorial Library

Analysis of Building Accessibility

Orange's Town-owned buildings range in levels of accessibility. For this report, the FRCOG has assigned categories of "functional accessibility" to each building for ease of reference. These categories are:

- **Accessible** – the facility is fully accessible to a wheeled mobility device user or person with mobility challenges;
- **Mostly Accessible** – A wheeled device user or person with mobility challenges can enter the facility, access the primary function within the facility, and access the bathroom;
- **Moderately Accessible** – A wheeled device user or person with mobility challenges can enter the facility, access the primary function within that facility, but cannot use the bathroom;
- **Minimally Accessible** – A wheeled device user or person with mobility challenges can only enter the facility, but cannot access the primary function or the bathroom;
- **Inaccessible** – A physical barrier exists that would prevent a wheeled device user from entering the facility.

The following table places each building into one of these categories:

Accessible	Mostly Accessible	Moderately Accessible	Minimally Accessible	Inaccessible
Highway Garage	Town Hall	Armory	Butterfield School	Wheeler Memorial Library
Tully Fire Station 2	Fisher Hill School	Dexter Park School		Wastewater Treatment Facility
	Moore-Leland Library	Transfer Station		Water Department
	Police Station	Orange Center Fire Station 1		Airport

The above assessment rates each building's accessibility based on the ability of people with disabilities to access the programs, services, and activities that are offered within those buildings. However, it should be noted that many Town buildings have areas within them that are not accessible at all (ex. basements or staff-only storage areas). Making these spaces accessible according to the 2010 ADA Standards may be structurally difficult and/or practically infeasible. Despite these potential obstacles, this accompanying Transition Plan identifies

issues within these spaces and recommends ways to improve accessibility in ways that may be feasible – at least for users who do not require wheeled mobility devices – while acknowledging the inaccessibility these spaces pose for some persons with disabilities.

An important caveat to this rating system is that it primarily evaluates the Town facilities from a member of the public's perspective, not necessarily from the perspective of an employee who must work in these facilities and access non-public spaces on a regular basis. However, all of the deficiencies in the buildings with respect to the 2010 ADA Guidelines have been noted in the ADA Transition Plan that is included in this Report.

Summary of Building Evaluation Findings

Accessible Buildings

Highway Garage

The Highway Garage is a newer building in Orange and is fully accessible. There are a few issues that can be corrected, such as raising the sign designating the ADA parking space, but overall, it is an accessible space and meets ADA guidelines.

Tully Fire Station #2

The Fire Station #2 in Tully is newly constructed and is fully accessible and meets the latest ADA guidelines.

Mostly Accessible Buildings

Town Hall

While this building is mostly accessible, it does have some issues that need to be addressed in order to make it fully accessible. Fortunately, most of these issues are relatively simple and inexpensive, such as replacing door knob fixtures and adjusting service counter heights. However, access to the ADA bathroom is problematic from the Assessor/Collector's side of the building. To access the bathroom from these offices, individuals who are unable to use stairs are required to exit the building and re-enter through the other main entrance. During the winter and in inclement weather, this is a potential burden on people with disabilities.

Another potentially problematic access issue is the location of the ADA parking in relation to the Town Hall. In order to travel from the ADA designated spaces in the parking lot, users must cross Prospect Street, which has a very steep cross slope of 6.8%.

ADA guidelines say that cross slopes should have a slope of less than 2%. Cross slopes steeper than this are difficult for users with mobility devices to navigate. Providing a safer way to access the Town Hall may require re-grading Prospect Street at the crossing or, a less expensive option, creating new head-in parking spaces behind the Town Hall. A feasibility study examining this should be undertaken.

Police Station

The Police Station has been rated as mostly accessible. While people with mobility challenges can enter the main entrance, access each department, and use the bathrooms; they may have difficulty using some of the Police Department's facilities. If a person with mobility challenges or a wheeled mobility device is brought to the Police Department's exterior entrance for booking, they would face a very steep ramp followed by a 10 inch step to enter the station. Instead, they would need to use the main entrance as an alternative.

Moore-Leland Library

The Moore-Leland Library is rated as mostly accessible. It is a one-floor building that allows visitors to enter, access its primary function, and use the bathroom. The accessibility issues that it has are minor and include low costs fixes such as: ensure that the bathroom door is self-closing and cover sink pipes to protect users from striking them. The biggest issue for this library is the fact that the ADA designated parking is a parallel space, which does not allow for room on the side for a wheelchair lift. A head-in parking space should be established that is wide enough to allow a minimum 5 foot access aisle.

Fisher Hill School

The Fisher Hill School is rated as mostly accessible in that users can access the primary function of the building and use the bathrooms. However, there are issues that should be addressed to bring the building into full ADA compliance. This includes: ensuring that bathroom doorways have enough clearance to the sides to pull open or push shut the doors; moving bathroom grab bars; ensuring that stall doors are self-closing; and securing carpets. Fortunately, most of these issues are relatively easy or inexpensive to correct. The more costly issues include providing an accessible route to the playground and bringing the ADA bathrooms fully up to code.

Fortunately, the Town of Orange has just been awarded a \$33 million grant through the Massachusetts's School Building Authority (MBSA) program to replace Dexter Park with an addition onto Fisher Hill School to accommodate Dexter Park schoolchildren, renovate Fisher Hill School and bring it up to code, and then ultimately demolish Dexter Park.

Moderately Accessible Buildings

Transfer Station

The Transfer Station is rated as moderately accessible because users can enter the building and access its primary function. Visitors may need assistance for some of the functions within the building, such as reaching the recycling areas or paying for fees at the service counter.

Orange Armory

The Armory in Orange is a historic building in town and as a result has accessibility issues. It has been rated as moderately accessible because visitors can enter the building and access the primary function of the building, but using the Women's bathroom may be difficult.

While technically entering the building is possible, it may be difficult for people with mobility issues. The main entrance hallway has a steep slope downwards with an uneven floor and no handrails. The elevator is operated with a key and there is no clear guidance on the elevator as to what the procedure is for gaining access to the elevator. The Men's 1st floor bathroom is accessible. The Women's 1st floor bathroom would be accessible if the door to the stall is rehung so that it swung outward to allow more room for maneuvering within the stall.

Dexter Park School

The Dexter Park School was constructed in the 1950's and as a result has many accessibility issues due to its age. Therefore it is rated as moderately accessible in that users can access the primary function of the building, but will have problems with the use of the bathrooms. However, while technically entering the building is possible, it is not easy for people with disabilities. The location of the ADA designated parking is unclear, as well as which entrance should be used for people with mobility devices – the side entrance closest to the ADA parking has a ramp, but is locked from the outside. Inside

the building, the issues are numerous and include: no accessible signage; doorways that are too narrow; many classrooms doorways do not have sufficient clearance to open/close doors; doorway thresholds are too high; and more. The more problematic access issues inside the building include the Staff/ADA bathroom, which is not large enough and does not meet many of the ADA-required codes. Accessing different locations such as the Principal's Office, Psychologist/Counselor's Office, and even the Cafeteria/Gymnasium are difficult for people with mobility impairments due to high thresholds, narrow doorways, and small spaces.

Fortunately, the Town of Orange has just been awarded a \$33 million grant through the Massachusetts's School Building Authority (MBSA) program to replace Dexter Park with an addition onto Fisher Hill School to accommodate Dexter Park schoolchildren, renovate Fisher Hill School, and then ultimately demolish Dexter Park.

Orange Center Fire Station #2

The Fire Station in Orange Center is moderately accessible because people can enter the building and seek assistance if necessary. However, accessing the bathroom facilities would be impossible for those with mobility challenges due to its location up the stairs.

Minimally Accessible Buildings

Butterfield School

Butterfield School was constructed in the 1950's and closed for use as a school in 2014 and has been vacant since that date. The age of the building means that it has many accessibility issues, and has a rating of minimally accessible. Entering the building is difficult and the presence of so many stairs requires that visitors must use a chair lift to access any of its amenities or bathrooms. The chair lift is near the end of its useable life and will need to be replaced. However, the installation of an elevator would make the building much more accessible.

The ramp leading to the accessible side entrance is too steep and narrow without handrails. The ramp leads to a small interior landing that then requires a visitor with mobility impairments to use a chair lift to access any of the building's amenities, which is not easy and there are no clear instructions on how to use the chair lift. Inside the building, the issues are numerous and include: no accessible signage; many classroom

doorways do not have sufficient clearance to open/close doors; doorway thresholds are too high; and more.

Inaccessible Buildings

Airport

The Airport is rated as inaccessible because it is difficult for people to enter the building due to its entry-way vestibules, which are too small and have doors that swing into the space. Removing the interior set of doors would facilitate visitors to be able to enter the building. The bathrooms in the Airport are not accessible due to their very small dimensions and would need to be completely remodeled to bring them up to ADA guidelines.

Wastewater Treatment Facility

The Town's Wastewater Treatment Facility is inaccessible due to the fact that it can only be accessed via a flight of stairs.

Water Department

The Orange Water Department is inaccessible due to the fact that it can only be accessed via a flight of stairs. Once inside, the doorways are too narrow and the bathroom can only be accessed down a very narrow flight of stairs into the basement.

Wheeler Memorial Library

The Wheeler Memorial Library was constructed over 100 years ago and, as a result of its historical nature, is inaccessible. Its accessibility issues are many, some of which include the following: the only way to enter the building is via a flight of stairs; the bathroom is much too small and not up to code; the Children's Room is located in the lower level via a flight of stairs; and the spaces between the main library stacks are too narrow to allow passage for individuals with mobility devices. Fortunately, the library has been accepted into the State's Public Library Construction Program as a potential source of funding to correct the ADA issues identified, while also bringing the building up to date.

Other Town Facilities

Parks

The Town's parks have varying levels of accessibility, which are detailed in Part D: ADA Transition Plan. Most of the Town parks have two main issues: ADA parking spaces

need to be clearly marked and accessible; and stable paths should either be installed or maintained to connect to various features of the parks, such as picnic benches and play structures. The Riverside Park currently has floating docks that are seasonal. These are not stable or accessible to people with mobility issues. Replacing these with a year-round, permanent dock would provide access to the Millers River for all residents.

Cemeteries

Similar to the Town parks, Orange's cemeteries have two main issues related to designated ADA parking and the lack of stable, smooth routes to access various parts of the cemeteries.

Program Accessibility

There are several Town programs/activities that are inaccessible from a structural perspective: the Wheeler Memorial Library, the Water Department, Airport, Building Inspectors, Board of Health, and the Wastewater Treatment Facility.

The services and programs offered at the Wheeler Memorial Library are not accessible at all due to presence of the stairs to enter the building. While library programs and services can be offered at the Moore Leland Library, this is located far from Town Center and require individuals to drive there. This could be a barrier to people who must use public transit or walk.

The same access issues due to stairs are also the true for the Water Department and Wastewater Treatment Facility. While neither facility offers programs or services for the public, the Water Commissioners do hold regular public meetings at the Water Department. Due to accessibility issues of that building, the Water Commissioners should move their open meetings to an accessible location, such as the Town Hall, until the building can be made accessible.

The Airport is currently not accessible to visitors because of its entry-way vestibules. Unless they are altered, people with mobility devices will not be able to enter without assistance to obtain Airport services.

The Building Inspectors and the Board of Health provide services on the first floor of the Armory. Visitors may not be able to access their programs and services for two reasons: the service window is too high for someone in a wheelchair to access and the doorways are too narrow for a wheelchair to pass through. The service window needs to be lowered so that visitors can let staff know that someone is present who requires services. At present, the only suitable alternative location for staff to meet with someone in that building is the Armory,

which may not be sufficiently private. Alternative locations, such as the Town Hall, may need to be identified as an accommodation to members of the public who may require it.

Sidewalk Accessibility

Orange Center, where the town's sidewalks are mostly located, has a flat to rolling topography making some of the slopes of the sidewalks accessible, while others can be very steep and challenging for anyone. The Town has been working to upgrade sidewalks, curb cuts, and ramps as funding becomes available. In 2019, Orange hired Tighe and Bond to create a Complete Streets Prioritization Plan. This plan looked at ways the roads and sidewalks could be made safer for motorists, bicyclists, and pedestrians. It also assessed the sidewalks for ADA accessibility. The Prioritization Plan and its recommendations have been included in this ADA Evaluation and Transition Plan in Appendix A.

Part D – ADA Transition Plan

The ADA Transition Plan for Orange catalogs every issue that the FRCOG staff discovered during the Self-Evaluation of the Town's buildings and facilities between February and June 2020. The Transition Plan recommends solutions to bring these identified issues into compliance with the 2010 ADA Guidelines and then prioritizes them, provides relative costs, estimates a feasible timeframe of implementation, and assigns the issue to the appropriate implementing department. In addition, the majority of issues have been documented with photographs, which can be found in an accompanying CD-ROM and Appendix B.

The following categories were used for the Transition Plan's prioritization:

- 1) Priorities: High
Medium
Low
- 2) Timeframe: Short (0-4 years)
Medium (5-9 years)
Long (10+ years)
Ongoing
- 3) Cost: \$\$\$\$ (Major capital project)
\$\$\$
\$\$
\$ (Maintenance)

Issues were assigned a “High” priority if they:

- Made it difficult and/or prevented a person with a disability to enter a room in which a service is provided;
- Made it difficult and/or prevented a person with a disability to use the bathroom facilities; or

Orange ADA Self-Evaluation & Transition Plan

Highway Garage (526 E. River Street)

Location	Element	Photo	Issues	Current Measure	Recommendations	Priority	Timeframe	Cost	Responsible Dept.
Approach and Entrances									
Main Entrance	Accessible Route	3353	Transition between asphalt and concrete has a high threshold.	1.5"	Repair transition so that threshold has a maximum gap of 1/4"	High	Medium	\$\$	Highway
Parking									
Parking	Accessible Parking	3350	Signage for parking is too low.	37"	Raise height of signs to a minimum of 60" from ground.	High	Short	\$	Highway
Access to Goods and Services									
Women's Bathroom	Toilet	3357	Flush control is not on the open side.		Reconfigure flush control to be on the open side of the stall.	Medium	Medium	\$\$	Highway

Orange ADA Self-Evaluation & Transition Plan

Tully Fire Station 2 (50 Mill Yard Road)

Location	Element	Photo	Issues	Current Measure	Recommendations	Priority	Timeframe	Cost	Responsible Dept.
Parking									
Front Parking	Accessible Parking	3616	There are no spaces designated as accessible.	0	Designate 1 space as accessible that is 8 feet wide with a 5 feet wide aisle and a sign that is 60" from ground.	High	Short	\$	Highway

Orange ADA Self-Evaluation & Transition Plan

Town Hall (6 Prospect Street)

Location	Element	Photo	Issues	Current Measure	Recommendations	Priority	Timeframe	Cost	Responsible Dept.
Approach and Entrances									
Front of Building	Signage		There is no signage on front of building indicating if either entrance is accessible.	0	Install signage on both entrances to show both are accessible.	Medium	Short	\$\$	Highway
Accessible Entrance	Crosswalk	2799	Crosswalk from parking lot to Town Hall has a steep cross slope.	6.8%	Reconstruct road so that crosswalk has a max of a cross slope of less than 2% or explore creating new parking spaces adjacent to Town Hall.	High	Long	\$\$\$\$	Highway
Accessible Entrance	Crosswalk	2800	Transition from roadway asphalt to sidewalk has an elevation change that could cause a tripping hazard.	1/2"	Repair roadway so that transition is no more than 1/4" in height.	High	Short	\$	Highway
Parking									
Lower parking lot	Parking	2797	Accessible space does not have a sign.	0	Install sign at least 60" from ground to denote that space is designated for ADA users.	Medium	Short	\$\$	Highway
Access to Goods and Services									
Entire Building	Doorways	2806	Door hardware is a turn knob that is not accessible.		Replace fixtures with lever that can be operated with a closed fist.	High	Short	\$\$	Highway
Main Hallway	Signage	2817	Signs protrude into hallway space causing a possible obstruction.	74" from floor	Raise signs at least 80" from floor for clearance underneath.	Low	Short	\$	Highway
Selectmen's Office	Doorway	2808	Threshold from Selectmen's Meeting Room to Copy Room is too high.	1"	Install beveled edge to threshold to reduce vertical height to < 1/4".	High	Short	\$	Highway
Selectmen's Office	Table	2807	Meeting table does not have clearance underneath.	15"	Replace table with one that has clearance underneath of 17" - 25".	Low	Medium	\$\$	Highway
Bathroom off of Copy Room	Doorway	2813	Doorway is too narrow.	30"	Reconfigure door so that it is at least 32" wide.	Low	Long	\$\$	Highway
	Grab bars	2813	There are no grab bars.	0	Install grab bars to side and rear of toilet.	Low	Long	\$\$	Highway
	Sink	2813	Sink is too small and pipes are exposed to contact.		Replace sink with one that has at least 17"-25" of clearance in depth underneath and 34" tall and has covers around pipes to protect against contact.	Low	Long	\$\$\$	Highway
Selectmen's Office	Accessible Route		Not enough room on pull side of door for maneuvering due to file cabinet.	3"	Relocate file cabinet so that there is a minimum of 18" to latch side of door to pull open.	Medium	Short	\$	Highway
Copy Room	Accessible Route	2812	Only entrance from Assessors/HR side of the office is by stairs.		Explore feasibility of adding a ramp in copy room.	High	Long	\$\$\$\$	Selectmen
ADA Bathroom	Doorway	2825	Door is not self-closing.		Replace hinge so that door self-closes.	High	Short	\$	Highway

Orange ADA Self-Evaluation & Transition Plan

Town Hall (6 Prospect Street)

Location	Element	Photo	Issues	Current Measure	Recommendations	Priority	Timeframe	Cost	Responsible Dept.
	Sink	2831	There is a pipe sticking out underneath the sink.		Cover pipe to protect against contact.	Medium	Short	\$	Highway
Billing Dept	Doorway	2838	Doorway is too narrow.	29"	Widen doorway to a minimum of 32".	Low	Long	\$\$\$	Highway
Town Clerk	Service Counter	2848	Service counter has no clearance underneath and is too high.	42"	Lower counter to a maximum height of 36" and provide clearance of 17"-25" in depth underneath.	Medium	Medium	\$\$\$	Highway
Assessors/Collector	Service Counter	2865	Service counter has no clearance underneath and is too high.	48"	Lower counter to a maximum height of 36" and provide clearance of 17"-25" in depth underneath.	Medium	Medium	\$\$\$	Highway
	Accessible Route		Only accessible route to ADA bathroom is to exit building and reenter through other main entrance.		Install another ADA bathroom on Assessor/Collector side of building or install ramp in copy room to allow accessible route.	High	Long	\$\$\$\$	Selectmen
Elevator	Signage	2877	There is no floor number and tactile star on door jamb indicating main floor.	0	Install floor numbers on door jamb as well as star indicating main floor.	Medium	Short	\$\$	Highway
Town Auditorium	Bathroom	2894	There is no fixed soap dispenser.	0	Install a soap dispenser on the wall no higher than 48" from floor.	Low	Long	\$\$	Highway

Orange ADA Self-Evaluation & Transition Plan

Police Station (400 East River Street)

Location	Element	Photo	Issues	Current Measure	Recommendations	Priority	Timeframe	Cost	Responsible Dept.
Approach and Entrances									
Main Entrance	Door	3469	Front door threshold is too high.	1"	Adjust threshold so that it does not exceed 1/4" in height.	High	Short	\$\$	Highway
Booking Entrance	Ramp	3474	Ramp leading to booking entrance is too steep, does not have handrails, and does not extend to door threshold.	10% slope & 10" step	Reconstruct ramp so that slope does not exceed 8.3%. Install handrails on both sides. Ensure that there is a level landing space at top and bottom that is 60"x 60".	High	Medium	\$\$\$	Highway
Parking									
Front Parking	Accessible Parking	3472	Parking space is not marked on pavement and is a parallel parking space.		Relocate accessible parking space so that it is a head-in space that is a minimum 8' wide with a 5' adjoining access aisle that is marked on pavement and has a sign 60" high from ground.	High	Short	\$\$	Highway
Access to Goods and Services									
Front Vestibule	Doorway	3467	Furniture next to door prevents a clear space to the side to push open door.	6"	Move furniture (MedReturn box) so that there is at least 12" of clear space to side of latch side of door to push open.	Medium	Short	\$	Police Dept.
Entire Building	Doorways	3477	Door hardware are turn knobs that cannot be operated with a closed fist.		Replace door hardware with ones that can be operable with one hand and not require tight grasping, pinching, or twisting of the wrist.	Low	Long	\$\$	Police Dept.
Entire Building	Signage		Most rooms are missing signs or are not accessible signs with tactile lettering.		Install signage with visually contrasting/tactile lettering and braille on the wall on latch side of door no higher than 60".	Low	Long	\$\$	Police Dept.
Conference Room	Doorway	3452	Doorway width is too narrow.	29"	Widen doorway to a minimum of 32".	Low	Long	\$\$\$	Police Dept.
Staff/ADA Bathroom	Soap Dispenser	3458	There is no soap dispenser attached to the wall.	0	Install soap dispenser on the wall next to the sink so that bottom edge is no higher than 44" from floor.	High	Short	\$\$	Police Dept.
Locker Room Bathroom	Shower	3438	The entrance to the shower is blocked by a 6" step.	6"	Remove step to shower and provide shower that is ADA compliant with grab bars and seat.	Low	Long	\$\$\$	Police Dept.
	Sink	3437	Sink has exposed pipes and turn knobs.		Cover pipes to protect against contact and replace turn knobs with fixtures that can be operated with a closed fist.	Medium	Medium	\$\$	Police Dept.
	Soap Dispenser	3458	There is no soap dispenser attached to the wall.	0	Install soap dispenser on the wall next to the sink so that bottom edge is no higher than 44" from floor.	Medium	Medium	\$\$	Police Dept.

Orange ADA Self-Evaluation & Transition Plan

Police Station (400 East River Street)

Location	Element	Photo	Issues	Current Measure	Recommendations	Priority	Timeframe	Cost	Responsible Dept.
Booking Room	Bench	3407	Bench does not have back support.		Replace bench with one that has back support or is affixed to the wall.	Medium	Medium	\$\$	Police Dept.
Booking Room	Counter	3408	Service counter is too high.	43"	Provide a counter that is no higher than 36" from floor.	Medium	Medium	\$\$	Police Dept.

Orange ADA Self-Evaluation & Transition Plan

Moore-Leland Library (172 Athol Road)

Location	Element	Photo	Issues	Current Measure	Recommendations	Priority	Timeframe	Cost	Responsible Dept.
Approach and Entrances									
Picnic Table	Accessible Route	3591	There is no accessible route to the picnic table.		Create a smooth, stable path to the picnic table or move table closer to the path.	Low	Long	\$\$	Highway
Main entrance	Sidewalk	3592	The transition between concrete and asphalt has a gap of 1-2".	1"-2"	Fill in gap so that it is not larger than 1/4".	High	Short	\$	Highway
Parking									
Parking	Accessible Parking	3588	The accessible parking space is a parallel space which does not allow sufficient side access to vehicle.		Construct an accessible parking space next to path so that it is a head-in space that is a minimum 8' wide with a 5' adjoining access aisle that is marked on pavement.	High	Short	\$\$\$	Highway
Access to Goods and Services									
Computer Desk	Seating	3606	The computer desk does not have clearance underneath.		Provide a desk that has clearance of 17"-25" in depth underneath.	Medium	Short	\$\$	Library
Bathroom	Signage	3602	The signage is not located on the latch side of the door.		Relocate signage so that it is located on the wall next to the latch side of the door between 40"-60" from floor.	High	Short	\$	Library
	Toilet	3599	Flush control is not on the open side.		Reconfigure flush control to be on the open side of the stall.	Medium	Medium	\$\$	Library
	Sink	3600	Pipes under sink are exposed and could be a strike hazard.		Cover pipes to protect against contact.	Low	Long	\$\$	Library
	Doorways	3598	Door is not self-closing.		Adjust hinges so that door is self-closing.	High	Short	\$	Library

Orange ADA Self-Evaluation & Transition Plan

Fisher Hill Elementary School (59 Dexter Street)

Location	Element	Photo	Issues	Current Measure	Recommendations	Priority	Timeframe	Cost	Responsible Dept.
Approach and Entrances									
Main entrance	Accessible Route	2225	There is a 2" gap between asphalt and concrete surfaces.	2"	Fill gap to create a smooth surface.	High	Short	\$	School District
Main entrance	Doorway	2228	There is not clear passage to the exterior intercom.		Maintain a clear 30" x 48" floor space under the intercom.	High	Short	\$	School District
Rear entrance	Doorway	2544	There is a gap of 1.5" and a height of 3" to threshold of rear door.	3"	Fill gap to create a smooth surface and transition to doorway so that the threshold does not exceed 1/4" in height.	High	Short	\$	School District
Sidewalks	Accessible Route	2541	There is a >1" gaps between asphalt and concrete surfaces and within the asphalt.	>1"	Fill gaps to create a smooth surface.	High	Short	\$	School District
Playground									
Playground	Accessible Route	2547	There is not an accessible route to the play area from where the ramp ends.		Provide an accessible route with smooth, stable surface connecting the ramp to the play area.	Medium	Medium	\$\$\$	School District
	Accessible Route	2548	There is not an accessible route to each of the play structures.		Provide an accessible route with smooth surface to each ground level play component.	Medium	Medium	\$\$\$	School District

Orange ADA Self-Evaluation & Transition Plan

Fisher Hill Elementary School (59 Dexter Street)

Location	Element	Photo	Issues	Current Measure	Recommendations	Priority	Timeframe	Cost	Responsible Dept.
Access to Goods and Services									
Entire building	Signage	2264	Most rooms are missing signs. There are no accessible signs with tactile lettering.		Install signage with visually contrasting/tactile lettering and braille on the wall on latch side of doors no higher than 60".	Medium	Medium	\$\$	School District
	Classroom sinks	2382	Classroom sinks do not have toe or knee clearance positioned for a forward approach.		Provide a sink with toe and knee clearance between 17"-25" for a forward approach.	Low	Long	\$\$\$\$	School District
	Classroom bathrooms	2318	There is not 18" to the latch side on the pull side of many bathroom doors due to placement of sinks.	<18"	Relocate sinks so that there is at least 18" to side of the door to pull open from inside the bathroom.	Low	Long	\$\$\$-\$\$\$\$	School District
	Classroom bathrooms	2324	Many of the in-classroom bathrooms do not have a clear 30"x48" space for a forward approach to the sinks.		Relocate sinks so that there is at least 30"x48" for a forward approach to the sink.	Low	Long	\$\$\$-\$\$\$\$	School District
Cafeteria	Entrance		Entrance to cafeteria kitchen is missing signage.		Install signage with visually contrasting/tactile lettering and braille on the wall on latch side of door no higher than 60".	High	Short	\$	School District
Main Office	Staff Kitchen	2253	Sink does not have toe or knee clearance positioned for a forward approach.		Provide a sink with toe and knee clearance of 17'-25" for a forward approach.	Medium	Medium	\$\$	School District
Women's Staff/ADA Bathroom	Accessible Route	2267	Insufficient space from vestibule area to go around privacy wall.		Relocate privacy wall so that there is a maneuvering clearance of 42" beyond the door and 48" between end of privacy wall and wall.	High	Short	\$\$	School District
	ADA stall	2270	There is not 18" to the latch side on the pull side of the door.		Move door so that there is 18" to the side of the latch so that door can be pulled open.	High	Medium	\$\$\$	School District
	Grab bars	1797	Side grab bar does not extend far enough from rear wall. Both grab bars are too low.	49" long and 30" high	Relocate grab bar so that it extends at least 54" from rear wall and is between 33" and 36" from floor.	High	Short	\$	School District
	ADA stall	1798	ADA stall door is not self-closing.		Replace hinge so that door self-closes.	High	Short	\$	School District
Men's Staff/ADA Bathroom	Toilet in ADA stall	2259	Flush control is not on the open side.		Reconfigure flush control to be on the open side of the stall.	Medium	Medium	\$\$	School District
	ADA stall	2263	ADA stall door is not self-closing.		Replace hinge so that door self-closes.	High	Short	\$	School District

Orange ADA Self-Evaluation & Transition Plan

Fisher Hill Elementary School (59 Dexter Street)

Location	Element	Photo	Issues	Current Measure	Recommendations	Priority	Timeframe	Cost	Responsible Dept.
	ADA sink	2258	Forward approach to sink is not possible due to heater.		Alter sink so that there is a clear floor space for a forward approach of at least 30"x48" long.	Medium	Medium	\$\$\$	School District
	Grab bars	2259	Side grab bar does not extend far enough from rear wall. Both grab bars are too low.	49" long and 30" high	Relocate grab bar so that it extends at least 54" from rear wall and is between 33" and 36" from floor.	High	Short	\$	School District
Nurse's Office	Accessible Route	1813	There is not sufficient maneuvering space through the office.	12"	Move furniture to ensure 36" of a clear path through room.	High	Short	\$	School District
	Grab bars	2284	Grab bars are too low.	30"	Relocate grab bars to be between 33" and 36" from floor.	High	Short	\$	School District
Library	Signage	2286	There is no signage for the Library at entrance.	0	Install signage with visually contrasting/tactile lettering and braille on the wall on latch side of door no higher than 60".	High	Short	\$\$	School District
Room 32-34	Accessible Route	2307	Shelving by the door is too low.	72"	Raise shelving to be a minum of 80" from floor to prevent obstructions.	Medium	Short	\$	School District
Room 36	Toilet	2319	Flush control is not on the open side.		Reconfigure flush control to be on the open side of the stall.	Medium	Medium	\$\$	School District
Room 39	Toilet	2337	Flush control is not on the open side.		Reconfigure flush control to be on the open side of the stall.	Medium	Medium	\$\$	School District
Room 37	Accessible Route	2344	Shelving by the bathroom door is too low.	65"	Raise shelving to be a minum of 80" from floor to prevent obstructions.	Medium	Short	\$	School District
	Toilet	2345	Protective cover around sink pipes are coming off.		Replace covers around pipes to protect against contact.	Medium	Short	\$\$	School District
Room 35	Toilet	2351	Flush control is not on the open side.		Reconfigure flush control to be on the open side of the stall.	Medium	Medium	\$\$	School District
Room 33	Toilet	2365	Flush control is not on the open side.		Reconfigure flush control to be on the open side of the stall.	Medium	Medium	\$\$	School District
	Accessible Route	2363	Wall partitions have bases that protrude into pathways and can cause a tripping hazard.	30"	Replace or relocate wall partitions with ones that provide a clear path of a minimum of 36".	High	Short	\$	School District
Room 31	Toilet	2376	Protective cover around sink pipes are coming off.		Replace covers around pipes to protect against contact.	Medium	Short	\$\$	School District
Room 29	Toilet	2383	Protective cover around sink pipes are coming off.		Replace covers around pipes to protect against contact.	Medium	Short	\$\$	School District
	Toilet	2384	Flush control is not on the open side.		Reconfigure flush control to be on the open side of the stall.	Medium	Medium	\$\$	School District
Room 25	Toilet	2397	Flush control is not on the open side.		Reconfigure flush control to be on the open side of the stall.	Medium	Medium	\$\$	School District

Orange ADA Self-Evaluation & Transition Plan

Fisher Hill Elementary School (59 Dexter Street)

Location	Element	Photo	Issues	Current Measure	Recommendations	Priority	Timeframe	Cost	Responsible Dept.
Room 23	Toilet	2406	Flush control is not on the open side.		Reconfigure flush control to be on the open side of the stall.	Medium	Medium	\$\$	School District
	Sink	2405	Clearance under bathroom sink is obstructed.		Relocate objects under the sink for clear path to allow a full forward approach to the sink.	Medium	Short	\$	School District
Elevator	Signage	2420	There is no tactile star on the elevator door jamb identifying the main entry level.		Install a tactile star on ground floor door jamb of the elevator.	Low	Short	\$	School District
Downstairs Mens Bathroom	Toilet	2429	Flush control is not on the open side.		Reconfigure flush control to be on the open side of the stall.	Medium	Medium	\$\$	School District
	Toilet	2383	Protective cover around sink pipes are coming off.		Replace covers around pipes to protect against contact.	Medium	Short	\$\$	School District
Room 5	Toilet	2452	Flush control is not on the open side.		Reconfigure flush control to be on the open side of the stall.	Medium	Medium	\$\$	School District
		2450	Protective cover around sink pipes are coming off.		Replace covers around pipes to protect against contact.	Medium	Short	\$\$	School District
	Accessible Route	2451	Shelving by the bathroom door is too low.	65"	Raise shelving to be a minum of 80" from floor to prevent obstructions.	Medium	Short	\$	School District
Room 3	Toilet	2459	Flush control is not on the open side.		Reconfigure flush control to be on the open side of the stall.	Medium	Medium	\$\$	School District
	Sink	2460	Sink controls are a turn knob that cannot be operated with a closed fist.		Replace sink water controls with ones that can be operable with one hand and not require tight grasping, pinching, or twisting of the wrist.	High	Short	\$\$	School District
	Sink	2460	Protective cover around sink pipes are coming off.		Replace covers around pipes to protect against contact.	Medium	Short	\$\$	School District
Room 7	Toilet	2480	Flush control is not on the open side.		Reconfigure flush control to be on the open side of the stall.	Medium	Medium	\$\$	School District
Room 1	Accessible Route	2466	There is not 12" to the latch side on the push side of the door.		Move shelving so that there is 12" to the side of the latch so that door can be pushed open.	Medium	Short	\$	School District
Downstairs Staff Kitchen	Stove	2507	Controls for stove are at back and require reaching across stove surface.		Replace stove with controls at front of stove.	Low	Long	\$\$	School District

Orange ADA Self-Evaluation & Transition Plan

Transfer Station (Jones Street)

Location	Element	Photo	Issues	Current Measure	Recommendations	Priority	Timeframe	Cost	Responsible Dept.
Approach and Entrances									
Office Entrance	Accessible Route	3125	Threshold to office is too high.	1.5"	Create a bevel to threshold so that threshold does not exceed 1/4" in height.	High	Short	\$	Transfer Station
Parking									
Parking	Accessible Parking	3143	There is no sign marking the ADA space and space is not wide enough.	5' wide space	Install a sign at least 60" in height designating the accessible space. Space should be at least 8 feet wide with 5ft wide aisle.	Hgh	Short	\$	Transfer Station
Office	Service Counter	3126	The service counter is too high and there is no clearance under the service counter.	40"	Install service counter that is no more than 36" high and has clearance underneath of 17-25".	Medium	Short	\$\$	Transfer Station
Doorway	Accessible Route	3130	There is not 12" of clear space to the latch side of the interior door to push open.	3"	Move service counter so that there is a minimum of 12" of clear space to the side of the latch side of the door.	Medium	Short	\$	Transfer Station
Recycling areas	Threshold	3136	The threshold to the indoor recycling area is too high.	1/2"	Create a bevel to threshold so that threshold does not exceed 1/4" in height.	High	Short	\$	Transfer Station

Orange ADA Self-Evaluation & Transition Plan

Armory (135 East Main Street)

*Used as Town's Polling Center

Location	Element	Photo	Issues	Current Measure	Recommendations	Priority	Timeframe	Cost	Responsible Dept.
Approach and Entrances									
Main entrance	Accessible Route	3574	There is a 3" gap between brick and concrete surfaces.	3"	Fill gap to create a smooth surface.	High	Short	\$	Highway
Main entrance	Accessible Route	3571	The slope of the hallway floor in the interior after the main entrance is too steep and uneven.	13%	If a slope is greater than 5%, it must be treated as a ramp with handrails.	High	Short	\$\$\$?
Parking									
Main parking lot	Accessible Parking	3577	Accessible parking spaces do not have signs.	0	Install signs marking the accessible parking at a minimum of 60" above the ground.	High	Short	\$\$	Highway
Main parking space next to building	Accessible parking	3576	Signs marking accessible parking are too low to the ground.	45"	Move signs higher to a minimum of 60" above the ground.	Medium	Short	\$	Highway
	Accessible parking	3576	Space does not have an adjoining access aisle.	9'	Space must be a minumum of 8' wide with a 5' wide aisle.	High	Short	\$	Highway
Access to Goods and Services									
Entire Building	Signage	3523	Most rooms are missing signs or are not accessible signs with tactile lettering.		Install signage with visually contrasting/tactile lettering and braille on the wall on latch side of door no higher than 60".	Medium	Medium	\$\$?
Picnic benches outside	Accessible route	3578	There is not an accessible route connecting the picnic tables to the parking lot.	0	Provide an accessible route with smooth surface to connect to the parking lot.	Low	Medium	\$\$	
2nd floor Skate Rink	Service Counter & Concession Stand	3480	Service counter is too high with no clearance underneath.	39"	Replace counter with one that is no more than 36" high and has a depth underneath of 17"-25".	Low	Medium	\$\$\$	
	Stage	3482	Stage is only accessible by stairs.		Create a ramp or chairlift to the stage level.	Low	Long	\$\$\$\$	
	Bathroom Sink	3488	There is exposed piping under the sink.		Cover the piping with insulation to protect against contact.	Medium	Medium	\$\$	
	ADA Stall	3491	The stall is too small and door swings in the wrong direction and is not self-closing.	57"x54"	Reconfigure stall door so that it hangs from hallway wall and encompasses the hallway. This should give minimum area requirements of 60"x 56".	High	Short	\$\$\$	
Elevator	Accessibility	3498	Elevator can only be used with assistance and needs a key. It is not clear how to get that assistance.		Either ensure elevator works without assistance or make clear with accessible signage, how to access that assistance.	High	Short	\$\$	

Orange ADA Self-Evaluation & Transition Plan

Armory (135 East Main Street)

*Used as Town's Polling Center

Location	Element	Photo	Issues	Current Measure	Recommendations	Priority	Timeframe	Cost	Responsible Dept.
		3498	Elevator does not have a number on door jamb indicating floor level nor a star for the main level.	0	Install numbers on door jambs as well as a star on main level. Signage should be visually contrasting/tactile lettering and braille.	Low	Short	\$\$	
Stairway	Railing	3505	Handrails do not extend past bottom of stairs.		Extend the handrail 12" past bottom of stairs so that it returns to a wall, guard, or landing surface.	Low	Long	\$\$	
1st Floor Ladies Bathroom	ADA Stall	3517	Door to stall is not self closing and has a lock that is not accessible.		Adjust closer to door so that it self closes and replace lock with one that can be operated with a closed fist.	High	Short	\$	
	ADA Stall	3519	Door swings into the stall space.		Reverse the swing of the door so that it swings out to allow more maneuvering space in the stall.	High	Short	\$	
	Sink	3522	There is exposed piping under the sink.		Cover the piping with insulation to protect against contact.	Medium	Medium	\$\$	
1st Floor Mens Bathroom	ADA Stall	3529	Door to stall is not self closing and has a lock that is not accessible.		Adjust closer to door so that it self closes and replace lock with one that can be operated with a closed fist.	High	Short	\$	
	Sink	3525	There is exposed piping under the sink.		Cover the piping with insulation to protect against contact.	Medium	Medium	\$\$	
	Grab Bars	3528	Grab bars are too low.	31"	Raise grab bars for height between 33"-36" from floor.	High	Short	\$	
	Toilet	3530	Flush control is not on the open side.		Reconfigure flush control to be on the open side of the stall.	Medium	Medium	\$\$	
Building Inspectors/Board of Health	Accessible Route	3533	Doorways are too narrow in office.	26.5"	Widen doorways so that there is a minimum of 32" of width.	Medium	Long	\$\$\$	
	Service Window	3532	Service window is too high with no clearance underneath.	42"	Lower service window and install counter that is no higher than 36" from floor and has a depth of 17"-25" below.	High	Short	\$\$\$	
Senior Center	Kitchen Service Counter	3558	Service counter is too high.	38"	Lower counter so that it is no higher than a maximum of 36" from floor.	Low	Long	\$\$\$	
	Kitchen Floor		Slope of kitchen floor is steep and uneven.	6.80%	Slopes should not exceed 5%, otherwise must be considered a ramp.	Low	Long	\$\$\$\$	

Orange ADA Self-Evaluation & Transition Plan

Dexter Park Elementary School (3 Dexter Street)

Location	Element	Photo	Issues	Current Measure	Recommendations	Priority	Timeframe	Cost	Responsible Dept.
Approach and Entrances									
Main entrance	Accessible Route	2555	There is a 2" gap between asphalt and concrete surfaces at entrance.	2"	Fill gap to create a smooth surface.	High	Short	\$	School District
Main entrance	Doorway	2556	Wooden threshold of door is too high.	2"	Install beveled edge to threshold to reduce vertical height to < 1/4".	High	Short	\$	School District
Rear Entrance to playground	Doorway	2755	There is a 2" gap between asphalt and concrete surfaces at entrance.	2"	Fill gap to create a smooth surface.	High	Short	\$	School District
Exterior of Building	Accessible Route		There is no signage indicating which entrance is accessible.	0	Add signage on exterior of building near the ADA parking spaces and on the accessible entrance letting visitors know where to enter.	High	Short	\$	School District
Parking									
Main parking lot	Accessible parking	2774	There is one space designated as ADA, but is far from main entrance and not clearly signed.	1	Create a minimum of 2 accessible spaces near main entrance with signage and pavement markings. Spaces should be a minimum of 8' wide with a shared 5' aisle.	High	Short	\$	School District
Playground									
Front Playground	Accessible Route	2766	Surface is covered in mulch making access difficult.		Make sure that ground surface complies with current <i>ASTM Standard Specification for Determination of Accessibility of Surface Systems Under and Around Playground Equipment</i> .	Medium	Medium	\$\$\$	School District
	Accessible Route	2764	There is not an accessible route to each of the play structures.		Provide an accessible route with smooth surface to each ground level play component.	Medium	Medium	\$\$\$	School District
Rear Playground	Accessible Route	2771	Surface is covered in mulch making access difficult.		Make sure that ground surface complies with current <i>ASTM Standard Specification for Determination of Accessibility of Surface Systems Under and Around Playground Equipment</i> .	Medium	Medium	\$\$\$	School District
	Accessible Route	2771	There is not an accessible route to each of the play structures.		Provide an accessible route with smooth surface to each ground level play component.	Medium	Medium	\$\$\$	School District

Orange ADA Self-Evaluation & Transition Plan

Dexter Park Elementary School (3 Dexter Street)

Location	Element	Photo	Issues	Current Measure	Recommendations	Priority	Timeframe	Cost	Responsible Dept.
Access to Goods and Services									
Entire building	Signage	2562	There are no accessible signs with tactile lettering.		Install signage with visually contrasting/tactile lettering and braille on the wall on latch side of door no higher than 60".	Medium	Medium	\$\$	School District
	Doorways	2600	Door hardware is a turn knob that is not accessible.		Replace fixtures with lever that can be operated with a closed fist.	High	Short	\$\$	School District
	Accessible Route	1766	Most classrooms entrances do not have 18" of clearance to side of latch on pull side of door or 12" of clearance to side of latch on push side of door due to furniture or walls.		Rearrange furniture to create appropriate clearances when possible. Otherwise, reconfigure doorways to provide required clearance.	High	Short-Long	\$-\$\$\$	School District
Principals Office	Doorways	2565	Doorway width is too narrow.	26"	Widen doorway to a minimum of 32".	Medium	Medium	\$\$\$	School District
Nurse's Office	Bathroom	2575	There are no grab bars for toilet.	0	Install side and rear grab bars at a height of 33"-36".	High	Short	\$\$	School District
	Bathroom	2575	Flush control is not on the open side.		Reconfigure flush control to be on the open side of the stall.	Medium	Medium	\$\$	School District
	Bathroom	2576	Sink has turn knobs that are not accessible.		Replace fixtures with levers that can be operated with a closed fist.	High	Short	\$\$	School District
	Bathroom	2576	Protective cover around sink pipes are coming off.		Replace covers around pipes to protect against contact.	Medium	Short	\$\$	School District
Cafeteria/Gymnasium	Entrance	2586	Threshold of doorway is too high.	1"	Install beveled edge to threshold to reduce vertical height to < 1/4".	High	Short	\$\$	School District
	Stage	2590	There are only stairs to access the stage.		Install ramp or lift to the stage.	Medium	Long	\$\$\$	School District
Hallway near Staff Bathrooms	Water Fountain	2601	The water fountain is too shallow to allow clearance underneath.	8"	Replace water fountain with one that has a depth of 17"-25".	Low	Long	\$\$\$	School District
Accessible Staff Bathroom	Sink	2607	Protective cover around sink pipes are coming off.		Replace covers around pipes to protect against contact.	Medium	Short	\$\$	School District
	Toilet	2608	Flush control is not on the open side.		Reconfigure flush control to be on the open side of the stall.	Medium	Medium	\$\$	School District
	Grab bars	2608	The grab bars are not high enough or long enough.	24" height 25"long	Install new grab bars that are 33"-36" in height and 54" long for side bar and 36" for rear bar.	High	Short	\$\$	School District
	Accessible Route	2606	There is not enough room in the bathroom for maneuvering to the toilet.	38" x 56"	Reconfigure bathroom so that there is at least 60" x 56" area for maneuvering.	High	Short	\$\$\$\$	School District

Orange ADA Self-Evaluation & Transition Plan

Dexter Park Elementary School (3 Dexter Street)

Location	Element	Photo	Issues	Current Measure	Recommendations	Priority	Timeframe	Cost	Responsible Dept.
Psychologist/ Counselor Office	Accessible Route	2613	There is not enough room for maneuvering with a wheelchair.	34"	Relocate furniture so that there is a minimum of 36" in width for an accessible route.	Medium	Short	\$	School District
Exterior Ramp to Exit near Room 21/22	Accessible Route	2643	Entrance at top of ramp does not have 18" of clearance to side of latch on pull side of door.	3"	Widen landing at top of ramp to have a minimum of 18" to be able to pull the door open.	High	Short	\$\$	School District
Room 1	Accessible Route	2651	There is a 6" step to enter the booth.	6"	Install ramp so that the vertical height does not exceed 1/4" and that ramp slope does not exceed 10%.	Low	Long	\$\$\$	School District
Room 7	Accessible Route	2684	Rugs are not secured and pose a tripping hazard.		Secure edge of rugs.	High	Short	\$	School District
Rear Exit to Playground near Room 9	Accessible Route	2705	Threshold is too high.	2"	Install beveled edge/ramp to threshold to reduce vertical height to < 1/4".	High	Short	\$\$	School District
Girls Bathroom	Sink	2708	Sinks have knobs that are difficult to operate and have exposed piping underneath.		Replace fixtures with lever that can be operated with a closed fist and cover pipes to prevent contact.	Medium	Medium	\$\$\$	School District
	Toilets	2709	There is no stall suitable for ADA accessibility.		Reconfigure stalls so that one stall meets ADA dimensional requirements with grab bars.	Medium	Long	\$\$\$	School District
Boys Bathroom	Sink	2708	Sinks have knobs that are difficult to operate and have exposed piping underneath.		Replace fixtures with lever that can be operated with a closed fist and cover pipes to prevent contact.	Medium	Medium	\$\$\$	School District
	Toilets	2709	There is no stall suitable for ADA accessibility.		Reconfigure stalls so that one stall meets ADA dimensional requirements with grab bars.	Medium	Long	\$\$\$	School District
Room 11	Sink	2721	Classroom sink does not have toe or knee clearance positioned for a forward approach.		Provide a sink with toe and knee clearance for a forward approach.	Medium	Medium	\$\$	School District
Room 19	Accessible Route	2684	Rugs are not secured and pose a tripping hazard.		Secure edge of rugs.	High	Short	\$	School District

Orange ADA Self-Evaluation & Transition Plan

Fire Station 1 (18 Water Street)

Location	Element	Photo	Issues	Current Measure	Recommendations	Priority	Timeframe	Cost	Responsible Dept.
Parking									
Front Parking	Accessible Parking	3103	There are no spaces designated as accessible.	0	Designate 1 space as accessible that is 8 feet wide with a 5 feet wide aisle and a sign that is 60" from ground.	High	Short	\$	Highway
Access to Goods and Services									
Dispatch/Front Office	Accessible Route	3088	There is a step to access the dispatch/front office.	6"	Create small ramp so that there is not more than 1/4" step.	Low	Long	\$\$	Fire Dept.
Second Floor	Accessible Route	3080	The only way to reach the 2nd floor is via stairs.		Install chair lift on stairs.	Low	Long	\$\$\$\$	Fire Dept.
Bathroom	Bathroom	3093	Bathroom is not big enough to maneuver with a personal mobility device.		Enlarge room to meet minimum dimensions for maneuverability.	Low	Long	\$\$\$\$	Fire Dept.
	Toilet	3093	There are no grab bars.		Install rear and side grab bars.	Low	Long	\$\$\$	Fire Dept.
	Sink	3093	Pipes under sink are exposed and could be a strike hazard.		Cover pipes to protect against contact.	Low	Long	\$\$	Fire Dept.
Kitchen	Sink	3102	Sink hardware are turn knobs that are not accessible.		Replace fixtures with lever that can be operated with a closed fist.	Low	Long	\$\$	Fire Dept.
	Stove	3101	Control knobs are on the back of the appliance.		Replace stove with one that has control knobs on front of appliance.	Low	Long	\$\$\$	Fire Dept.

Orange ADA Self-Evaluation & Transition Plan

Butterfield School (South Main Street)

*Because this building is currently vacant. There are no timeframes assigned as "short".

Location	Element	Photo	Issues	Current Measure	Recommendations	Priority	Timeframe*	Cost	Responsible Dept.
Approach and Entrances									
Main entrance	Accessible Route	3078	Sidewalks leading to main entrance from South Main Street are very steep.	>5%	Reconstruct sidewalks so that at least one has slopes no steeper than 5% and cross-slopes of a maximum of 2%.	Medium	Long	\$\$\$\$	Selectmen
Main entrance	Doorway	2940	There are multiple steps leading to the main door.		Create a ramp to the entrance with a max slope of 8.3% and 36" wide. Or install signage directing people to the ADA accessible entrance.	Low	Long	\$\$-\$\$\$\$	Selectmen
Side ADA entrance on south side	Doorway	3068	Ramp leading to the doorway is too steep.	9%	Reconstruct ramp so that slope does not exceed 8.3% and install a handrail on each side. Ramp should have a level landing space of 60"x60".	High	Medium	\$\$\$	Selectmen
ADA Entrance on south side	Chair lift	3016	Chair lift is the only method to access any of the floors in the building and is expiring.		Replace chair lift with an elevator.	High	Medium	\$\$\$\$	Selectmen
Side entrance on north side	Doorway	2926	There are multiple steps leading to the main door.		Create a ramp to the entrance with a max slope of 8.3% and 36" wide or install signage directing people to the ADA entrance.	Low	Long	\$\$-\$\$\$\$	Selectmen
Parking									
Main parking lot	Accessible parking	3067	Signs marking accessible parking are too low to the ground and not clearly marked.		Move signs higher to a minimum of 60" above the ground and mark space with paint.	Medium	Medium	\$	Selectmen
Playground									
Playground	Accessible Route	3069	Surface is covered in mulch making access difficult.		Make sure that ground surface complies with current <i>ASTM Standard Specification for Determination of Accessibility of Surface Systems Under and Around Playground Equipment</i> .	Low	Long	\$\$\$	Selectmen
	Accessible Route	3070	There is not an accessible route to each of the play structures.		Provide an accessible route with smooth surface to each ground level play component.	Low	Long	\$\$\$	Selectmen

Orange ADA Self-Evaluation & Transition Plan

Butterfield School (South Main Street)

*Because this building is currently vacant. There are no timeframes assigned as "short".

Location	Element	Photo	Issues	Current Measure	Recommendations	Priority	Timeframe*	Cost	Responsible Dept.
Access to Goods and Services									
Entire building	Doorways	2946	Door hardware is a turn knob that is not accessible.		Replace fixtures with lever that can be operated with a closed fist.	Medium	Long	\$\$	Selectmen
	Signage	2562	There are no accessible signs with tactile lettering.		Install signage with visually contrasting/tactile lettering and braille on the wall on latch side of door no higher than 60".	Low	Long	\$\$	Selectmen
	Doorways	2949	Most classroom entrances do not have 12" of clearance to side of latch on push side of door due to walls.		Alter doorways and walls so that there is 12" of clearance on push side of doors. In addition ensure that there is 18" of clearance on pull side of doors.	Medium	Long	\$\$\$\$	Selectmen
	Interior passage ways between classrooms		Many hallways are too narrow.	28"	Accessible routes should be a minimum of 36" wide.	Low	Long	\$\$\$\$	Selectmen
1st Floor ADA Bathroom	Sink	2958	There is exposed piping under the sink.		Cover the piping with insulation to protect against contact.	Medium	Medium	\$\$	Selectmen
	Grab bars	3005	Grab bars are too low.	28"	Install side and rear grab bars at a height of 33"-36".	High	Medium	\$	Selectmen
	Toilet	2957	Flush control is not on the open side.		Reconfigure flush control to be on the open side of the stall.	Medium	Long	\$\$	Selectmen
Girl's Bathroom Basement Level	ADA Stall	3004	Door lock is a fixture that is not accessible.		Replace fixtures with lever that can be operated with a closed fist.	Medium	Medium	\$\$\$	Selectmen
	Toilet Room	3003	There is exposed piping under the sink.		Cover the piping with insulation to protect against contact.	Medium	Medium	\$\$	Selectmen
	ADA stall		ADA stall door is not self-closing.		Replace hinge so that door self-closes.	High	Medium	\$	Selectmen
	Grab bars	2957	Grab bars are too low.	30"	Install side and rear grab bars at a height of 33"-36".	High	Medium	\$	Selectmen
Boy's Bathroom Basement Level	Accessible Route	3009	There route between the privacy wall and lockers is too narrow.	35"	Remove lockers so that there is a minumum of 48" of width for an accessible route past privacy wall.	High	Long	\$\$	Selectmen
	Sink	3012	There is exposed piping under the sink.		Cover the piping with insulation to protect against contact.	Medium	Medium	\$\$	Selectmen
	Grab Bars	3010	The side grab bar does not extend far enough from rear wall.	50"	Relocate side grab bar so that it extends at least 54" from rear wall.	High	Medium	\$	Selectmen
	Toilet	3011	Flush control handle is not on the open side.		Relocate flush control to open side of toilet.	Medium	Medium	\$\$	Selectmen

Orange ADA Self-Evaluation & Transition Plan

Butterfield School (South Main Street)

*Because this building is currently vacant. There are no timeframes assigned as "short".

Location	Element	Photo	Issues	Current Measure	Recommendations	Priority	Timeframe*	Cost	Responsible Dept.
Auditorium	Seating	3018	There are no designated wheelchair spaces in the auditorium.	0	There should be a minumum of 6 wheelchair spaces dispersed to allow location choice. Individual spaces should be 36" wide and 2 adjacent spaces should be a minimum of 33" wide. They should be a minimum of 48" deep.	Low	Long	\$\$\$	Selectmen
	Stage	3023	The only way to acces the stage is via steps.		Install a chair lift or ramp to the stage.	Low	Long	\$\$\$\$	Selectmen
Upstairs Girls ADA Bathroom	Signage	3038	There is no signage on hallway indicating that the bathroom is accessible.		Install signage with visually contrasting/tactile lettering and braille on the wall on wall no higher than 60".	Medium	Medium	\$	Selectmen

Orange ADA Self-Evaluation & Transition Plan

Airport (80 Airport Street)

Location	Element	Photo	Issues	Current Measure	Recommendations	Priority	Timeframe	Cost	Responsible Dept.
Approach and Entrances									
Main Entrance	Accessible Route	3395	Front and rear vestibules are too narrow	48" x 49" total area	Widen vestibule so that there is a minimum of 48" of clear space between doors when fully open or remove inner door.	Medium	Long	\$\$-\$\$\$	Airport Commission
Parking									
Parking	Accessible Parking	3402	The accessible spaces are not clearly marked and the signs are too low.	33" & 24"	Mark spaces with pavement paint and raise signs to a minimum of 60" from ground.	High	Short	\$	Highway
Sidewalk Ramp	Accessible Route	3403	Ramp from roadway is not marked with detectable warning strip and is too narrow.		Install a detectable/tactile warning strip at bottom of ramp and widen ramp area so that there is a flat landing area of 48"x 48" before it turns onto sidewalk.	Medium	Long	\$\$\$	Highway
Access to Goods and Services									
Entire building	Doorways	3376	Door hardware is a turn knob that cannot be operated with a closed fist.		Replace door hardware with ones that can be operable with one hand and not require tight grasping, pinching, or twisting of the wrist.	Medium	Long	\$\$	Airport Commission
	Signage		Most rooms are missing signs or are not accessible signs with tactile lettering.		Install signage with visually contrasting/tactile lettering and braille on the wall on latch side of door no higher than 60".	Medium	Long	\$\$	Airport Commission
Offices	Doorways	3367	Doorways are too narrow.	27"	Widen doorway to a minimum of 32".	Low	Long	\$\$\$	Airport Commission
Both Bathrooms	Accessible Route	3381	Door and pathway to toilet and sink are too narrow.	26"	Widen doorway to a minimum of 32" and route to sink and toilet to a minimum of 36".	High	Long	\$\$\$\$	Airport Commission
	Sink	3382	Sink has exposed pipes and turn knobs.		Cover pipes to protect against contact and replace turn knobs with fixtures that can be operated with a closed fist.	Medium	Medium	\$\$	Airport Commission
	Mirror	3383	Mirror is too high.	54"	Lower mirror so that bottom is a minimum of 40" from floor.	Low	Medium	\$	Airport Commission
	Toilet	3384	There is not enough space to maneuver around the toilet.		Remove privacy wall and reconfigure bathroom so that there is at least 60" of width in the toilet compartment.	High	Long	\$\$\$\$	Airport Commission
	Grab bars	3384	There are no grab bars around toilet.	0	Install side and rear grab bars 33"-36" from floor.	High	Long	\$\$\$\$	Airport Commission

Orange ADA Self-Evaluation & Transition Plan

Wastewater Treatment Facility (295 West Main Street)

Location	Element	Photo	Issues	Current Measure	Recommendations	Priority	Timeframe	Cost	Responsible Dept.
Approach and Entrances									
Main Entrance	Accessible Route		Entrance is not accessible up the flight of stairs.		Install ramp to main entrance.	Medium	Long	\$\$\$	Highway
Parking									
Parking	Accessible Parking	3230	There are no parking spaces designated as accessible.	0	Designate 1 space as acessible that is 8' wide with a 5' wide aisle.	Medium	Short	\$	Highway
Access to Goods and Services									
Staff Room	Accessible Route	3216	There is no clearance under sink.	0	Provide a sink with toe and knee clearance for a forward approach.	Low	Long	\$\$\$	Wastewater
Entire building	Signage	2562	There are no accessible signs with tactile lettering.		Install signage with visually contrasting/tactile lettering and braille on the wall on latch side of door no higher than 60".	Low	Long	\$\$	Wastewater

Orange ADA Self-Evaluation & Transition Plan

Water Department (16 West Myrtle Street)

Location	Element	Photo	Issues	Current Measure	Recommendations	Priority	Timeframe	Cost	Responsible Dept.
Approach and Entrances									
Main Entrance	Accessible Route		The only way to enter the building is a flight of stairs.		Install a ramp to the main entrance of the building that does not exceed 8.3% and has handrails on both sides.	High	Long	\$\$\$\$	Highway
	Front Porch		Front porch landing does not have handrails.		Install handrails on front porch.	High	Medium	\$\$\$	Highway
Parking									
Parking	Accessible Parking		There are no parking spaces designated as accessible.	0	Designate 1 space as accessible that is 8' wide with a 5' wide aisle.	High	Short	\$	Highway
Access to Goods and Services									
Entire building	Doorways	3642	Door hardware are turn knobs that cannot be operated with a closed fist.		Replace door hardware with ones that can be operable with one hand and not require tight grasping, pinching, or twisting of the wrist.	Medium	Long	\$\$	Water Dept.
Bathroom	Accessible Route	3646	Only bathroom is located down a flight of stairs and therefore inaccessible.		Construct accessible bathroom on main floor.	Medium	Long	\$\$\$\$	Water Dept.
	Toilet Area	3651	Toilet and sink area do not meet size or feature requirements		Construct accessible bathroom on main floor with grab bars, etc.	Medium	Long	\$\$\$\$	Water Dept.
Stairway	Doorway	3644	Doorway is too narrow.	20"	Widen doorway to a minimum of 32".	Low	Long	\$\$\$	Water Dept.

Orange ADA Self-Evaluation & Transition Plan

Wheeler Memorial Library (49 East Main Street)

Location	Element	Photo	Issues	Current Measure	Recommendations	Priority	Timeframe	Cost	Responsible Dept.
Parking									
Parking	Accessible Parking	3146	There is no designated accessible parking.	0	Install a minimum of 2 spaces with signage at least 60" high from ground with pavement markings for spaces at least 8' wide with a shared 5' wide aisle.	High	Short	\$\$	Highway
Access to Goods and Services									
Entrances	Accessible Route	3150	There is no accessible entrance. All entrances have a flight of stairs.	0	Install a ramp or chair lift to at least 1 entrance and mark that entrance with directional signage.	High	Medium	\$\$\$\$	Library
Entire Building	Doorways	3160	Door hardware is a turn knob that is not accessible.		Replace fixtures with lever that can be operated with a closed fist.	High	Medium	\$\$	Library
Front Vestibule	Doorways	3212	Vestibule does not have enough clear space between doors.	30"	Remove interior doors or reconfigure vestibule so that there is a minimum of 48" between doors when they are open.	High	Medium	\$\$-\$\$\$	Library
Basement Floor	Accessible Route	3179	There is no accessible route to Community Room and Children's Room.	0	Install a elevator or chair lift to basement level.	High	Medium	\$\$\$\$	Library
Basement Stairs	Handrails	3178	Handrails do not extend past bottom of stairs and end abruptly.		Extend the handrail so that it returns to a wall, guard, or landing surface.	Low	Long	\$\$	Library
Community Room	Doorways	3166	Doors are too narrow.	30"	Widen doorways to a minimum of 32" wide.	High	Medium	\$\$\$	Library
Community Room	Accessible Route	3161	Rugs are loose and pose a tripping hazard.		Secure rugs so that they lay flat and do not pose a tripping hazard.	Medium	Short	\$	Library
Library Stacks	Accessible Route	3181	Routes between shelving are too narrow.	31" average	Routes can be 32" wide for a minimum length of 2ft, then have to be at least 36" wide.	Medium	Medium	\$\$\$	Library
Offices	Doorways	3190	Doors are too narrow.	30"	Widen doorways to a minimum of 32" wide.	High	Medium	\$\$\$	Library
Bathroom	Grab bars	3188	There are no grab bars.	0	Install side and rear grab bars for toilet 33" high from floor.	High	Medium	\$\$	Library
	Toilet	3188	Flush control is not on the open side.		Reconfigure flush control to be on the open side of the stall.	Medium	Medium	\$\$	Library
	Sink	3189	Pipes under sink are exposed and could be a strike hazard.		Cover pipes to protect against contact.	Low	Long	\$\$	Library
	Sink	3189	Sink hardware is a turn knob that is not accessible.		Replace fixtures with lever that can be operated with a closed fist.	Low	Long	\$\$	Library
	Accessible Route	3189	Bathroom is not big enough to maneuver with a personal mobility device.		Enlarge room to meet minumum dimensions of 60"x56" for maneuverability.	High	Long	\$\$\$\$	Library

Wheeler Memorial Library (49 East Main Street)

Location	Element	Photo	Issues	Current Measure	Recommendations	Priority	Timeframe	Cost	Responsible Dept.
	Doorways		Door is not self-closing and has a lock that cannot be operated with a closed fist.		Adjust hinges so that door is self-closing and replace lock with one that can be operated with a closed fist.	Medium	Medium	\$\$	Library

Orange ADA Self-Evaluation & Transition Plan

Riverside Park and Boathouse (including adjoining town-owned parcel)

Location	Element	Photo	Issues	Current Measure	Recommendations	Priority	Timeframe	Cost	Responsible Dept.
Approach and Entrances									
Main Entrance	Accessible Route	2914	Path has gaps between paver stones.	1/2"	Fill gaps with appropriate aggregate stone fill to ensure accessibility <u>and</u> permeability of LID site.	Medium	Medium	\$\$	Highway
Approach and Entrances									
Dock	Accessible Route		Seasonal floating docks are not stable or accessible.		Install a permanent dock that is wide enough for two-way traffic and is stable.	Medium	Short	\$\$\$	Highway

Veterans Memorial Park

Approach and Entrances									
Depot Street	Accessible Route	3120	Ramp slope leading to Depot Street is too steep.	17%	Reconfigure ramp slope so that it does not exceed 12.5%.	Medium	Medium	\$\$\$	Highway
Water Street	Accessible Route	3105	There is no crosswalk leading to the ramp on Water Street across from Fire Station.		Paint a crosswalk on the street connecting to the ramp/sidewalk on Water Street.	Medium	Short	\$\$	Highway
Access to Goods and Services									
Seating	Benches	3115	The benches located on the accessible route do not have backs.	0	Install benches with back support located on the sidewalk.	Medium	Medium	\$\$	Highway
Sidewalk	Accessible Route	3106	The bricks on the sidewalk are uneven in places.		Repair bricks that have come loose to ensure a smooth surface.	High	Short	\$	Highway

Butterfield Park

Parking									
Parking	Accessible Parking	3239	There are no parking spaces designated as accessible.	0	Designate 1 space as accessible that is 8' wide with a 5' wide aisle near pavilion.	High	Short	\$	Highway
Approach and Entrances									
	Accessible Route	3247	There is no accessible route to the various structures/sites such as tennis court.	0	Create a smooth, path from parking lot to each activity area.	Medium	Long	\$\$\$	Highway
Access to Goods and Services									
Playground	Accessible Route	3248	There is no accessible route to each of the various play structures.	0	Create a smooth, path from to each play structure.	Low	Short	\$\$	Highway

Orange ADA Self-Evaluation & Transition Plan

Butterfield Park continued

Location	Element	Photo	Issues	Current Measure	Recommendations	Priority	Timeframe	Cost	Responsible Dept.
	Accessible Route	3246	Surface is covered in mulch making access difficult.		Make sure that ground surface complies with current <i>ASTM Standard Specification for Determination of Accessibility of Surface Systems Under and Around Playground Equipment</i> .	Medium	Medium	\$\$\$	Highway
Gazebo	Accessible Route	3255	The only way to access interior of gazebo is via steps.		Create a ramp with a maximum slope of 8.3%, that is 36" wide, has handrails, and a level landing space of 60"x60".	Low	Long	\$\$\$	Highway

Lake Mattawa

Parking									
Parking	Accessible Parking	3687	There are no parking spaces designated as accessible.	0	Designate 1 space as acessible that is 8' wide with a 5' wide aisle. Sign should be a minimum of 60" above ground.	Medium	Short	\$	Highway
Access to Goods and Services									
Beach	Accessible Route	3689	There is not enough space between barrier rocks to pass through with a mobility device.	0	Relocate some rocks so that there is a passageway that is at least 36" wide.	Low	Short	\$	Highway

Muzzey Field

Approach and Entrances									
Drainage Structure	Accessible Route	3657	Drop inlet grate has large openings that are dangerous to indiviudals with impaired sighting or must use crutches and other mobility devices.	0	Replace drop inlet grate with one that has holes no bigger than 1/2 square inch.	High	Short	\$\$	Highway
Parking									
Parking	Accessible Parking	3668	There are no parking spaces designated as accessible.	0	Designate 1 space as acessible that is 8' wide with a 5' wide aisle. Sign should be a minimum of 60" above ground.	Medium	Short	\$	Highway
Access to Goods and Services									
Concession/Ticket Stands	Service Counter	3689	Both concession and ticket windows are too high.	48" and 40"	Lower service counters to a maximum height of 36" and with a depth of 17"-25" underneath.	Low	Long	\$\$\$	Highway

Bicentennial Park

Parking									
Parking	Accessible Parking	3700	There are no parking spaces designated as accessible.	0	Designate 1 space near the pavilion with a sign on a flat stable surface.	Low	Long	\$\$	Highway
Access to Goods and Services									

--

Orange ADA Self-Evaluation & Transition Plan

Bicentennial Park continued

Location	Element	Photo	Issues	Current Measure	Recommendations	Priority	Timeframe	Cost	Responsible Dept.
Pavilion	Accessible Route	3694	There is no accessible route to the pavilion.		Create a smooth, stable path to the pavilion with a slope that does not exceed 5%.	Low	Long	\$\$\$	Highway

Goddard Park

Parking									
Parking	Accessible Parking	3631	There are no parking spaces designated as accessible.	0	Designate 1 space near the park with a sign.	Low	Long	\$\$	Highway

Athol Mahar Sports Fields

Parking									
Parking	Accessible Parking	3286	There are no parking spaces designated as accessible.	0	Designate 2 spaces near the fields with a sign.	Low	Long	\$\$	Highway
Access to Goods and Services									
Fields	Accessible Route	3287	There is no accessible route to the fields.		Create a smooth, path from the accessible parking spaces to the sports fields.	Low	Long	\$\$	Highway

Orange ADA Self-Evaluation & Transition Plan

Town Center Parking Lot (W. Main Street and S. Main Street)

Location	Element	Photo	Issues	Current Measure	Recommendations	Priority	Timeframe	Cost	Responsible Dept.
Parking lot meets ADA requirements.									

Route 2A West Parking Lot (across from 21 W. Main Street)

Location	Element	Photo	Issues	Current Measure	Recommendations	Priority	Timeframe	Cost	Responsible Dept.
	Accessible Parking	3236	There are no accessible parking spaces.	0	Designate at least 1 space for accessible parking that is 8ft wide with a 5ft wide aisle and a sign that is at least 60" from ground.	Medium	Short	\$\$	Highway

Orange ADA Self-Evaluation & Transition Plan

Holtshire Cemetery

Location	Element	Photo	Issues	Current Measure	Recommendations	Priority	Timeframe	Cost	Responsible Dept.
Approach and Entrances									
	Accessible Route	3692	There is no smooth, stable path going around the cemetery.	0	Create a smooth, stable path on roadway and through main areas of cemetery.	Low	Long	\$\$\$\$	Highway

North Orange Cemetery

Approach and Entrances									
Main Entrance	Accessible Route	3584	There is no accessible route to enter the cemetery.	0	Create a smooth, stable path leading through the rock wall. If slope exceeds 5% treat as a ramp with handrails.	Low	Long	\$\$\$	Highway
Parking									
Parking	Accessible Parking	3586	There are no parking spaces designated as accessible.	0	Designate 1 space as acessible that is 8' wide with a 5' wide aisle near pavilion.	Low	Long	\$	Highway

Central Cemetery

Approach and Entrances									
Main Entrance	Accessible Route	3580	There is no accessible route to enter the cemetery, many areas require steps.	0	Create a smooth, stable path leading through the rock wall. If slope exceeds 5% treat as a ramp with handrails.	Low	Long	\$\$\$	Highway
Parking									
Parking	Accessible Parking	3582	There are no parking spaces designated as accessible.	0	Designate 1 space as accessible with a sign at least 60" above the ground.	Low	Long	\$	Highway

South Cemetery

Parking									
Parking	Accessible Parking	3302	There are no parking spaces designated as accessible.	0	Designate 1 space as accessible with a sign at least 60" above the ground.	Low	Long	\$	Highway

Appendix A

2019 Orange Complete Streets Prioritization Plan



Complete Streets Funding Program Project Prioritization Plan

Municipality MassDOT District		Orange 2	Date Name/Title	10/11/2019																	
Project Details			EJ	Complete Streets Location			Project Origin and Type		Complete Streets Needs						Complete Streets Funding Request			Construction Schedule			
Rank	Project Name	Project Description	Environmental Justice Population	Project Limits	Project Start Location: X,Y Coordinates (MA State Plane meter)	Project End Location: X,Y Coordinates (MA State Plane meter)	Complete Streets Project Origin (planning documentation or supporting analysis)	Complete Streets Project Type (refer to the Eligible Projects Worksheet)	Safety	ADA Accessibility	Pedestrian Mobility	Bicycle Mobility	Transit Operations and Access	Vehicular Operations	Freight Operations	Will this project be in Coordination with other Communities? (list, if applicable)	Total Estimated Project Cost	Complete Streets Funding Requested	Other Funding Source(s) and Amount (if applicable)	Anticipated Construction Duration (number of months)	Desired Construction Start Date (month/year)
1	South Main Street from Main Streets Intersection to E/W River Street	Reconfigure crosswalks, curbs, RRFBs, and signage, improve sidewalk at bridge to meet ADA accessibility, install ped scale lighting, bike lane markings	Yes	N/E/W Main Street to E/W River Street	133,543; 927,007	133,552; 926,765	ADA Transition Plan/Assessment	P1, P2, P3, P4, P9, P12, S9	X	X	X	X				N/A	\$291,000	\$255,000	\$36,000		
2	South Main Street between E/W River Street and Gay Street/Burril Ave.	Upgrade crosswalks and curb ramps, repair sidewalks, relocate utilites to improve ADA accessibility, install shoulders and ped signage, bike lane markings	No	E/W River Street to Gay Street/Burril Ave	133,552; 926,765	133,643; 925,826	ADA Transition Plan/Assessment	P1, P2, P3, P4, P9, S2, S15	X	X	X	X				N/A	\$724,000	\$400,000	\$324,000		
3	South Main Street at E/W River Street	Upgrade curb ramps, repair pavement at crosswalks, relocate equipment and improve ADA accessibility, install new ped signal equipment	No	South Main Street and E/W River Street Intersection	133,552; 926,765	133,552; 926,765	ADA Transition Plan/Assessment	P2, P3, P5, P9, P13, S1, S2	X	X	X					N/A	\$160,000	\$140,000	\$20,000		
4	East Main Street (N. Main to Grove St)	Remove extra CW, new crosswalk, curb ramps, bike lane and sharrow markings and miscellaneous markings	No	N. Main St to Grove Street	133,726; 927,024	134,280; 926, 786	Roadway Maintenance Plan	P4, S1	X	X	X	X				N/A	\$120,000	\$105,000	\$15,000		
5	East Main Street (Grove St to Whitney St)	Curb ramps, bike lane striping, sidewalk repains, curb resetting, refresh pavement markings	No	Grove Street to Whitney Street	133,543; 927,007	133,726; 927,024	ADA Transition Plan/Assessment	P2, P3, P9	X	X	X	X				N/A	\$91,000	\$80,000	\$11,000		
6	East Main Street/Grove Street	Install Ped signage, new curb ramps, sidewalk repairs, RRFBs, curb resetting	No	East Main Street/Grove Street Intersection	133,726; 927,024	133,726; 927,024	ADA Transition Plan/Assessment	P2, P3, P9, P13	X	X	X					N/A	\$74,000	\$65,000	\$9,000		
7	East Main Street/Mechanic Street	Install Ped signage, new curb ramps, sidewalk repairs, curb resetting	No	East Main Street/Mechanic Street Intersection	133,850; 927,034	133,850; 927,034	ADA Transition Plan/Assessment	P1, P2, P3, P4, P9		X	X			X		N/A	\$34,000	\$30,000	\$4,000		
8	East Main Street/Bacon Street	Upgrade crosswalks and curb ramps, install ped signage, RRFBs, drainge structure relocation	No	East Main Street/Bacon Street Intersection	133,971; 926,962	133,971; 926,962	ADA Transition Plan/Assessment	P2, P3, P4, P9, S12	X	X	X					N/A	\$63,000	\$55,000	\$8,000		
9	North Main Street 1	Install Sidewalk Between Prospect ST and Lincoln Ave, new curb ramps and crosswalk at Dexter ST	Yes	Prospect Street to Lincoln Avenue	133,695; 927,753	133,546; 927,079	Roadway Maintenance Plan	P1, P2, P3, P5, P9	X	X	X					N/A	\$610,000	\$400,000	\$210,000		
10	North Main Street 2	Reconstruct sidewalks, new curb ramps, upgrade crosswalks, ped lighting	Yes	Prospect Street to W/E Main Street	133,546; 927,079	133,543; 927,007	Roadway Maintenance Plan	P1, P2, P3, P9, S9		X	X			X		N/A	\$268,000	\$235,000	\$33,000		
11	West Main Street	Reconstruct sidewalks, new curb ramps and crosswalk at Ball ST, ped lighting	Yes	136 West Main Street to N/S Main Street	133,008; 927,160	133,543; 927,007	Roadway Maintenance Plan	P1, P2, P3, P9, S9		X	X					N/A	\$257,000	\$225,000	\$32,000		
12	Main Streets Intersection	Reconstruct intersection to meet ADA requirement, upgrade crosswalks and curb ramps, install new ped signal equipment, reconstruct "hollow" sidewalk, Opticom preemption	Yes	Main Street Intersection	133,543; 927,007	133,543; 927,007	Safety Audit	P1, P2, P3, P9, P13, S1, S2,	X	X	X			X		N/A	\$787,000	\$400,000	\$387,000		
13	East River Street 1	Construct sidewalk from South Main and Public Works Building	No	South Main Street to 95 East River Street	133,552; 926,765	134,051; 926,497	Bicycle/Pedestrian Audit	P2, P3, P5, P9		X	X	X				N/A	\$450,000	\$400,000	\$50,000		
14	East River Street 2	Install bicycle facilites between Public Works Building and Athol Town Line	Yes	95 East River St to Athol Town Line	133,552; 926,765	136,234; 924,743	Bicycle/Pedestrian Audit	B2, B5, B7, B11						X		N/A	\$171,000	\$150,000	\$21,000		
15	East River Street 3	Install bus shelters at senior housing complex, short sidewalk sections, curbing, RRFB, crosswalk, accessible ramps	Yes	451 East River Street	135,163; 926,208	135,163; 926,208	CS Needs Assessment	T1, T2, T3	X	X	X			X		N/A	\$114,000	\$100,000	\$14,000		
16	Water Street	Install curb ramps and bus stop signage, upgrade crosswalk at Depot Street and repair sidewalks	No	East Main Street to South Main Street	133,638; 927,017	133,549; 926,854	Roadway Maintenance Plan	P1, P2, P3, P4, P9, T1	X	X	X			X		N/A	\$63,000	\$55,000	\$8,000		
17	West River Street	Repair sidewalk, relocate utilities from ramps, upgrade crosswalks and curb ramps.	No	Briggs Street to South Main Street	132,650; 926,829	133,552; 926,765	ADA Transition Plan/Assessment	P1, P2, P3, P4, P9		X	X					N/A	\$149,000	\$130,000	\$19,000		
18	Hayden Street	Sidewalk between High School and King Street	No	East Main Street to Sandrah Drive	133,790; 926,675	133,900; 925,559	ADA Transition Plan/Assessment	P1, P5		X	X					N/A	\$918,000	\$400,000	\$518,000		
19	Pleasant Street	Sidewalk reconstruction on both sides, install crosswalks and curb ramps at Putnam Street, new and reset curbing	No	West River Street to Carpenter Street	133,384; 926,750	133,304; 925,795	ADA Transition Plan/Assessment	P1, P2, P3, P9, S1, S12		X	X					N/A	\$947,000	\$400,000	\$547,000		

Appendix B

Summary of responses by Orange Department Heads regarding ADA Policy Requirements

Effective Communication Checklists

General Nondiscrimination Checklists

Website Checklists

Orange ADA Self-Evaluation

Effective Communication Checklist		Total Responses	
	Questions	Yes	No
1)	Does the public entity know how to provide the following for people who are deaf or hard of hearing?		
	a. Sign language, oral, and cued speech interpreters	2	8
	b. Video remote interpreting (VRI) services		10
	c. Computer-assisted real-time transcription (CART) services		10
	d. Assistive listening devices		9
	e. Open and closed captioning of videos		9
	f. Real time captioning of television programs		9
	g. Other		5
2)	Does the public entity know how to provide documents in the following formats for people how are blind or visually impaired and others with print disabilities?		
	a. Braille		10
	b. Large print	7	3
	c. Audio recordings	2	8
	d. Accessible electronic formats that can be accessed by screen reading software (plain text or html)	2	8
	e. Screen reader software installed on a computer that is used by the public (ie. library)	2	8
	f. Magnification software installed on a computer that is used by the public (ie. computer lab)	3	7
	g. Optical readers		9
	h. Other		8
3)	Does the public entity have a policy or procedure to handle requests for auxiliary aids and services?		9
4)	Are employees and officials aware of the public entity's obligation to provide auxiliary aids and services?	6	4
5)	Do employees and officials know how to arrange for auxiliary aids and services? Arrangements could be made directly or through the ADA coordinator or another staff person.	2	8
6)	Does the public entity give primary consideration to the person with a disability when determining what type of auxiliary aid or service to provide?	5	5
7)	Are employees and officials aware that it is inappropriate to request that family members and friends of people who are deaf serve as sign language interpreters, except in emergencies or if the individual wants the family member or friend to interpret and it's appropriate to do so?	4	6
8)	Are employees and officials aware that a companion of a program participant has a right to auxiliary aids and services if the companion has a communication disability and is an appropriate person with whom the public entity should or would communicate?	3	7
9)	Are captions and audio description provided on videos and television programs the public entity produces and videos on its website?		5
10)	Does the public entity have a policy or procedure for determining if an auxiliary aid or service would be an undue financial and administrative burden?		9

Orange ADA Self-Evaluation

Effective Communication Checklist		Total Responses	
	Questions	Yes	No
11)	Do employees and officials know how to respond to telephone calls made through Video Relay Services and Telecommunication Relay Services so that the calls are responded to in the same manner as other telephone calls?	1	9
12)	Where telephones are available to the public for making outgoing calls, such as in hospital waiting rooms, are TTYs available for people with hearing and speech disabilities?		3
13)	Do telephone emergency services, including 911, provide direct access to people who use TTYs and computer modems?		5

Orange ADA Self-Evaluation

General Nondiscrimination Checklist		Total Responses	
	Questions	Yes	No
1)	Do policies, practices and procedures provide an equal opportunity for people with disabilities to participate in services, programs and activities; that is, do policies not discriminate against people on the basis of disability?	9	
2)	Are there circumstances in which the participation of a person with a disability would be excluded or restricted?	2	8
3)	If yes, are the exclusions or restrictions necessary to the operation of the program or to the safety of other participants?	3	2
4)	Are there separate services, programs or activities for people with disabilities or a class of people with disabilities?	1	8
5)	Do all employees who contract with outside agencies, organizations or businesses know that the public entity's obligations apply whether the public entity provides the service, program or activity directly or contracts for it?	6	3
6)	Does the public entity notify each contractor of its responsibilities for providing contracted services in a nondiscriminatory manner?	3	5
7)	Does the public entity require assurances from contractors of their fulfillment of Title II requirements?	3	4
8)	Are there procedures to ensure that contractors provide the services, programs and activities in a nondiscriminatory manner consistent with the Title II requirements?	3	4
9)	Are employees and officials aware that the public entity is obligated to make a reasonable modification in policies, practices, or procedures if the modification is necessary for a person with a disability to participate?	10	
10)	Are employees and officials aware that:		
	a. The public entity must allow service animals to accompany people with disabilities in all areas where people without service animals are allowed to go?	11	
	b. Only two questions may be asked: (1) Is the dog a service animal required because of a disability? and (2) What work or task has the dog been trained to perform?	5	6
	c. The public entity may not ask about a person's disability, require medical documentation, require a special identification card or training documentation for the dog, or ask that the dog demonstrate its ability to perform the work or task?	9	2
	d. A person with a disability cannot be asked to remove his service animal from the premises unless: (1) the dog is out of control and the handler does not take effective action to control it or (2) the dog is not housebroken and, in these circumstances employees must offer the person with the disability the opportunity to obtain goods or services without the animal's presence?	7	4
	e. The public entity must permit a miniature horse to accompany a person with a disability where reasonable?	7	4
11)	Are employees and officials aware that:		
	a. People with mobility disabilities may use wheelchairs, scooters and manually-powered mobility aids, such as walkers, crutches, canes, braces, or other similar devices designed for use by individuals with mobility disabilities in any areas open to pedestrian use?	11	
	b. People with mobility disabilities may use other power-driven mobility device in any areas open to pedestrian use unless the public entity can demonstrate that the class of other power-driven mobility devices cannot be operated in accordance with legitimate safety requirements?	10	1

Orange ADA Self-Evaluation

General Nondiscrimination Checklist		Total Responses	
	Questions	Yes	No
	c. They may not ask about the nature and extent of the individual's disability, but may ask an individual to provide a credible assurance that the mobility device is required because of the person's disability?	7	3
12)	Are employees and officials aware that the public entity may not place a surcharge on people with disabilities to cover the costs of measures, such as the provision of auxiliary aids or program accessibility, that are required to provide nondiscriminatory treatment?	10	1
13)	Are tickets for accessible seats sold during the same hours; through the same methods of purchase (by telephone, on site, through a website, or through third-party vendors); and during the same stages of sales (pre-sales, promotions, general sales, wait lists, or lotteries) as non-accessible seats?		
14)	If accessible seating is not available in areas of the venue with lower prices, is lower priced accessible seating available in higher priced locations?		
15)	Do venues and third-party sellers provide the same information about accessible seats as provided about non-accessible seats?		
16)	Can ticket sellers describe accessible seating in enough detail to permit the purchaser to determine if a seat meets his or her needs?		
17)	Do ticket sellers know that people purchasing a ticket for a wheelchair space may purchase up to three additional seats for their companions as close as possible to the wheelchair space and that these companion seats may include wheelchair spaces?		
18)	Do ticket sellers know that unsold accessible seats may be released and sold to members of the general public in only one of three circumstances: when all non-accessible seats have been sold (excluding luxury boxes, club boxes, suites, and seats the venue holds been sold; or when all non-accessible seats in a particular price category have been sold back when declaring a sell-out); or when all non-accessible seats in a particular seating section have been sold; or when all non-accessible seats in a particular price category have been sold?		
19)	If the venue permits patrons to give or sell their tickets to others, does the venue know that the same right must be extended to patrons with disabilities and that those tickets may be sold to someone who does not have a disability?		
20)	Do ticket sellers know that for single event tickets, venues may ask purchasers to state that they require, or are purchasing tickets for someone who requires, the features of an accessible seat?		
21)	Do ticket sellers know that for series of events tickets, purchasers may be asked to attest in writing that they require, or are purchasing tickets for someone who requires, the features of an accessible seat?		
22)	Is information about the public entity's accessible services, activities and facilities available to the public and to current and future program participants?	3	5

Orange ADA Self-Evaluation

Website Accessibility Checklist

Website Accessibility Checklist		Total Responses	
	Questions	Yes	No
1)	Is there a policy that the public entity's webpages will be accessible, that is, in compliance with the W3C Web Content Accessibility Guidelines (WCAG) 2.0 or Section 508 Standards?		3
2)	Are the staff and contractors who are responsible for webpage and content development aware of the policy?	1	2
3)	Are the staff and contractors who are responsible for webpage and content development knowledgeable about these standards?		3
4)	Has the website been tested for compliance with either of these standards?		3
5)	If yes, have people with disabilities who use screen reading software and other assistive technology participated in the evaluation?		3
6)	Is there a plan for making the existing web content accessible?	2	1
7)	Is there a plan for making future web content accessible?	2	1

Appendix C

Photographs documenting issues found in the Transition Plan

Airport



IMG_3394



IMG_3395



IMG_3396



IMG_3397



IMG_3398



IMG_3399



IMG_3401



IMG_3402



IMG_3403



IMG_3404



IMG_3406



IMG_3367



IMG_3370



IMG_3371



IMG_3372



IMG_3373



IMG_3374



IMG_3376



IMG_3377



IMG_3378



IMG_3380



IMG_3381



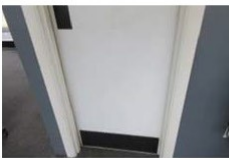
IMG_3382



IMG_3383



IMG_3384



IMG_3385



IMG_3386



IMG_3387



IMG_3388



IMG_3389



IMG_3390



IMG_3391



IMG_3392



IMG_3393

Armory



IMG_3575



IMG_3576



IMG_3577



IMG_3578



IMG_3579



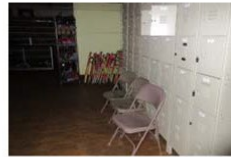
IMG_3477



IMG_3478



IMG_3480



IMG_3481



IMG_3482



IMG_3484



IMG_3485



IMG_3487



IMG_3488



IMG_3489



IMG_3490



IMG_3491



IMG_3492



IMG_3493



IMG_3494



IMG_3495



IMG_3498



IMG_3500



IMG_3501



IMG_3503



IMG_3505



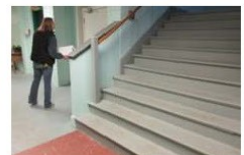
IMG_3507



IMG_3508



IMG_3509



IMG_3510



IMG_3511



IMG_3512



IMG_3513



IMG_3516



IMG_3517



IMG_3518



IMG_3519



IMG_3520



IMG_3521



IMG_3522



IMG_3523



IMG_3525



IMG_3527



IMG_3528



IMG_3529



IMG_3530



IMG_3531



IMG_3532



IMG_3533



IMG_3534



IMG_3535



IMG_3538



IMG_3539



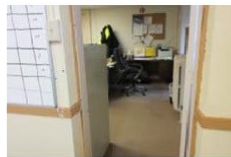
IMG_3541



IMG_3542



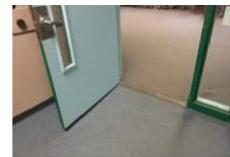
IMG_3545



IMG_3546



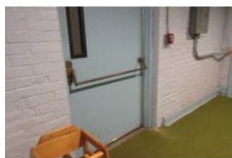
IMG_3547



IMG_3549



IMG_3552



IMG_3554



IMG_3555



IMG_3558



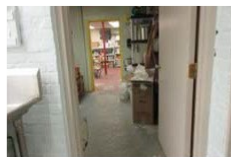
IMG_3559



IMG_3560



IMG_3562



IMG_3564



IMG_3565



IMG_3570



IMG_3571

Bicentennial Park



IMG_3698



IMG_3700



IMG_3701



IMG_3694



IMG_3695



IMG_3696



IMG_3697

Butterfield Park



IMG_3253



IMG_3254



IMG_3255



IMG_3259



IMG_3260



IMG_3261



IMG_3263



IMG_3266



IMG_3270



IMG_3271



IMG_3238



IMG_3239



IMG_3240



IMG_3241



IMG_3243



IMG_3247



IMG_3248



IMG_3251

Butterfield School



IMG_3043



IMG_3046



IMG_3051



IMG_3056



IMG_3057



IMG_3059



IMG_3061



IMG_3062



IMG_3063



IMG_3064



IMG_3065



IMG_3067



IMG_3068



IMG_3069



IMG_3070



IMG_3071



IMG_3072



IMG_3073



IMG_3074



IMG_3075



IMG_3076



IMG_3077



IMG_3078



IMG_2926



IMG_2927



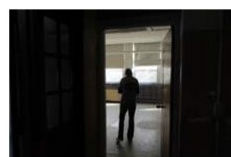
IMG_2928



IMG_2929



IMG_2930



IMG_2931



IMG_2932



IMG_2933



IMG_2934



IMG_2935



IMG_2936



IMG_2937



IMG_2938



IMG_2939



IMG_2940



IMG_2941



IMG_2942



IMG_2943



IMG_2944



IMG_2946



IMG_2947



IMG_2949



IMG_2951



IMG_2952



IMG_2953



IMG_2954



IMG_2955



IMG_2956



IMG_2957



IMG_2958



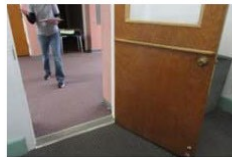
IMG_2959



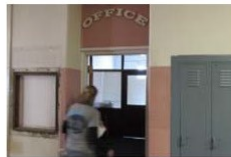
IMG_2961



IMG_2963



IMG_2965



IMG_2966



IMG_2968



IMG_2969



IMG_2970



IMG_2971



IMG_2974



IMG_2976



IMG_2978



IMG_2979



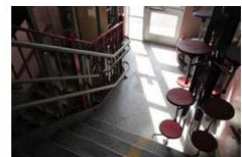
IMG_2980



IMG_2981



IMG_2983



IMG_2985



IMG_2986



IMG_2987



IMG_2988



IMG_2989



IMG_2991



IMG_2992



IMG_2993



IMG_2994



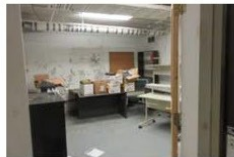
IMG_2996



IMG_2997



IMG_2998



IMG_3000



IMG_3003



IMG_3004



IMG_3005



IMG_3007



IMG_3008



IMG_3009



IMG_3010



IMG_3011



IMG_3012



IMG_3013



IMG_3015



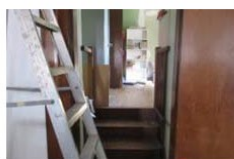
IMG_3016



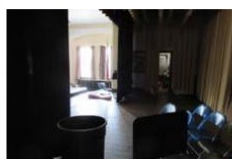
IMG_3017



IMG_3018



IMG_3020



IMG_3024



IMG_3025



IMG_3026



IMG_3028



IMG_3029



IMG_3030



IMG_3036



IMG_3037



IMG_3038



IMG_3039



IMG_3040



IMG_3041



IMG_3042

Central Cemetery



IMG_3583



IMG_3580



IMG_3581



IMG_3582

Dexter Park School



IMG_2769



IMG_2770



IMG_2771



IMG_2772



IMG_2773



IMG_2774



IMG_2775



IMG_2776

Dexter Park School continued



IMG_2777



IMG_2778



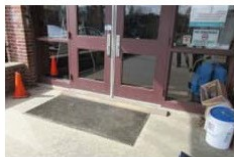
IMG_2779



IMG_2554



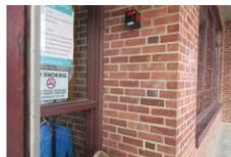
IMG_2555



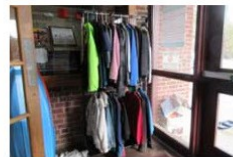
IMG_2556



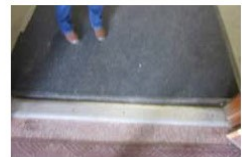
IMG_2557



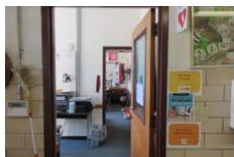
IMG_2558



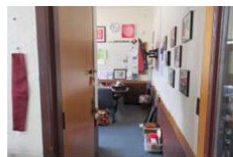
IMG_2560



IMG_2561



IMG_2562



IMG_2563



IMG_2564



IMG_2565



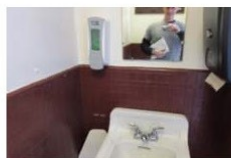
IMG_2566



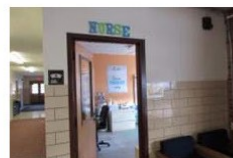
IMG_2568



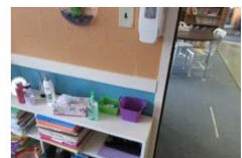
IMG_2569



IMG_2570



IMG_2571



IMG_2572



IMG_2573



IMG_2574



IMG_2575



IMG_2576



IMG_2577



IMG_2578



IMG_2579



IMG_2580



IMG_2581



IMG_2583



IMG_2584



IMG_2585



IMG_2586



IMG_2587



IMG_2588



IMG_2590



IMG_2592



IMG_2593



IMG_2594



IMG_2595



IMG_2599



IMG_2600



IMG_2601



IMG_2602



IMG_2603



IMG_2604



IMG_2605



IMG_2606



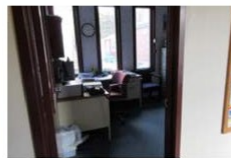
IMG_2607



IMG_2608



IMG_2609



IMG_2610



IMG_2611



IMG_2612



IMG_2613



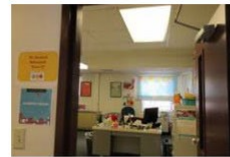
IMG_2616



IMG_2618



IMG_2619



IMG_2620



IMG_2624



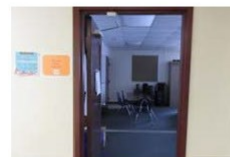
IMG_2626



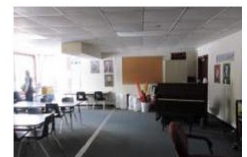
IMG_2627



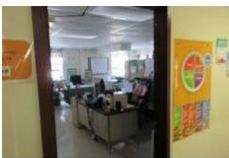
IMG_2629



IMG_2630



IMG_2633



IMG_2634



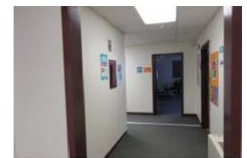
IMG_2635



IMG_2637



IMG_2639



IMG_2640



IMG_2590



IMG_2592



IMG_2593



IMG_2594



IMG_2595



IMG_2599



IMG_2600



IMG_2601



IMG_2602



IMG_2603



IMG_2604



IMG_2605



IMG_2606



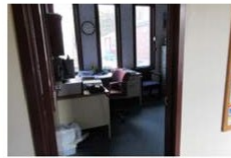
IMG_2607



IMG_2608



IMG_2609



IMG_2610



IMG_2611



IMG_2612



IMG_2613



IMG_2616



IMG_2618



IMG_2619



IMG_2620



IMG_2624



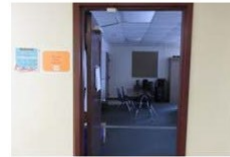
IMG_2626



IMG_2627



IMG_2629



IMG_2630



IMG_2633



IMG_2634



IMG_2635



IMG_2637



IMG_2639



IMG_2640



IMG_2711



IMG_2712



IMG_2713



IMG_2714



IMG_2715



IMG_2716



IMG_2719



IMG_2720



IMG_2721



IMG_2722



IMG_2723



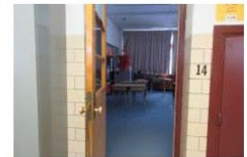
IMG_2725



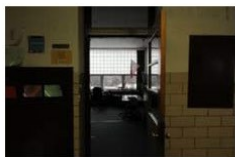
IMG_2727



IMG_2729



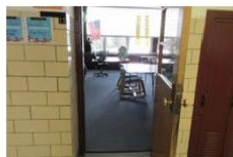
IMG_2730



IMG_2734



IMG_2736



IMG_2738



IMG_2742



IMG_2744



IMG_2746



IMG_2748



IMG_2750



IMG_2754



IMG_2755



IMG_2756



IMG_2757



IMG_2759



IMG_2761



IMG_2763



IMG_2764



IMG_2765



IMG_2766



IMG_2767



IMG_2768

Downtown Parking Lot



IMG_2910



IMG_2907



IMG_2908



IMG_2909

Highway Garage



IMG_3364



IMG_3365



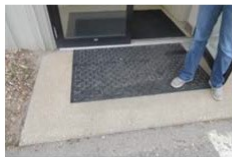
IMG_3350



IMG_3351



IMG_3352



IMG_3353



IMG_3354



IMG_3355



IMG_3356



IMG_3357



IMG_3358



IMG_3359



IMG_3360



IMG_3361



IMG_3362



IMG_3363

Tully Fire Station #2



IMG_3624



IMG_3625



IMG_3626



IMG_3627



IMG_3628



IMG_3615



IMG_3616



IMG_3617



IMG_3618



IMG_3619



IMG_3620



IMG_3621



IMG_3622



IMG_3623

Orange Center Fire State #1



IMG_3096



IMG_3097



IMG_3098



IMG_3099



IMG_3100



IMG_3101



IMG_3102



IMG_3104



IMG_3079



IMG_3080



IMG_3081



IMG_3082



IMG_3083



IMG_3084



IMG_3085



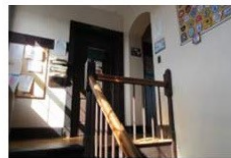
IMG_3086



IMG_3087



IMG_3088



IMG_3089



IMG_3090



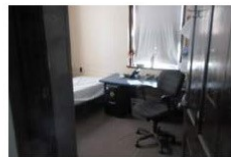
IMG_3091



IMG_3092



IMG_3093



IMG_3094



IMG_3095

Fisher Hill School



IMG_2540



IMG_2541



IMG_2542



IMG_2543



IMG_2544



IMG_2545



IMG_2546



IMG_2547



IMG_2548



IMG_2549



IMG_2550



IMG_2551



IMG_2552



IMG_2553



IMG_2222



IMG_2223



IMG_2224



IMG_2225



IMG_2226



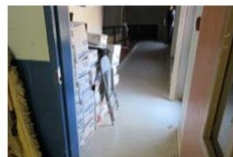
IMG_2227



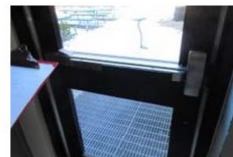
IMG_2228



IMG_2229



IMG_2230



IMG_2231



IMG_2233



IMG_2234



IMG_2235



IMG_2236



IMG_2237



IMG_2238



IMG_2239



IMG_2240



IMG_2241



IMG_2242



IMG_2243



IMG_2244



IMG_2247



IMG_2248



IMG_2249



IMG_2252



IMG_2253



IMG_2254



IMG_2255



IMG_2256



IMG_2257



IMG_2258



IMG_2259



IMG_2262



IMG_2263



IMG_2264



IMG_2265



IMG_2266



IMG_2267



IMG_2268



IMG_2269



IMG_2270



IMG_2271



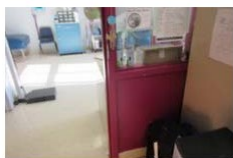
IMG_2272



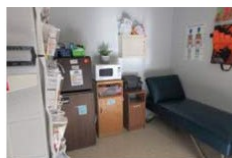
IMG_2273



IMG_2274



IMG_2276



IMG_2278



IMG_2279



IMG_2281



IMG_2282



IMG_2283



IMG_2284



IMG_2285



IMG_2286



IMG_2287



IMG_2288



IMG_2290



IMG_2291



IMG_2292



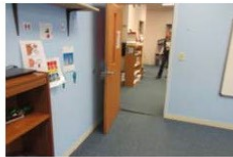
IMG_2294



IMG_2296



IMG_2297



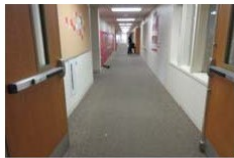
IMG_2298



IMG_2299



IMG_2300



IMG_2301



IMG_2302



IMG_2303



IMG_2305



IMG_2307



IMG_2308



IMG_2309



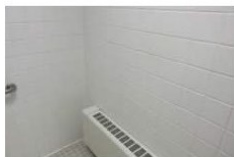
IMG_2310



IMG_2311



IMG_2312



IMG_2313



IMG_2314



IMG_2315



IMG_2316



IMG_2317



IMG_2318



IMG_2319



IMG_2320



IMG_2321



IMG_2322



IMG_2323



IMG_2324



IMG_2325



IMG_2326



IMG_2327



IMG_2328



IMG_2329



IMG_2330



IMG_2331



IMG_2332



IMG_2333



IMG_2334



IMG_2335



IMG_2336



IMG_2337



IMG_2338



IMG_2339



IMG_2340



IMG_2341



IMG_2342



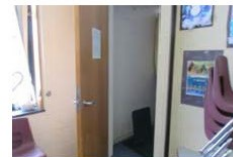
IMG_2343



IMG_2344



IMG_2345



IMG_2346



IMG_2347



IMG_2348



IMG_2349



IMG_2350



IMG_2351



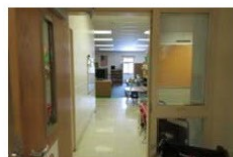
IMG_2352



IMG_2353



IMG_2354



IMG_2355



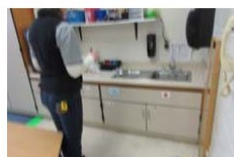
IMG_2356



IMG_2357



IMG_2358



IMG_2359



IMG_2360



IMG_2361



IMG_2362



IMG_2363



IMG_2364



IMG_2365



IMG_2366



IMG_2367



IMG_2368



IMG_2369



IMG_2370



IMG_2372



IMG_2374



IMG_2375



IMG_2376



IMG_2377



IMG_2378



IMG_2379



IMG_2380



IMG_2381



IMG_2382



IMG_2383



IMG_2384



IMG_2385



IMG_2386



IMG_2387



IMG_2388



IMG_2389



IMG_2390



IMG_2391



IMG_2392



IMG_2396



IMG_2397



IMG_2398



IMG_2399



IMG_2400



IMG_2401



IMG_2402



IMG_2403



IMG_2404



IMG_2405



IMG_2406



IMG_2407



IMG_2408



IMG_2409



IMG_2410



IMG_2411



IMG_2412



IMG_2413



IMG_2417



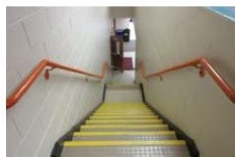
IMG_2418



IMG_2419



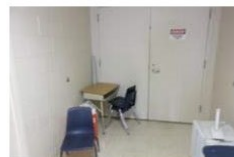
IMG_2420



IMG_2421



IMG_2422



IMG_2423



IMG_2424



IMG_2425



IMG_2426



IMG_2427



IMG_2428



IMG_2429



IMG_2430



IMG_2432



IMG_2433



IMG_2434



IMG_2435



IMG_2436



IMG_2437



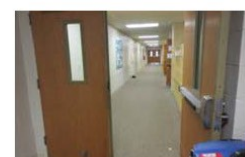
IMG_2438



IMG_2439



IMG_2440



IMG_2441



IMG_2443



IMG_2444



IMG_2445



IMG_2446



IMG_2449



IMG_2450



IMG_2451



IMG_2452



IMG_2453



IMG_2454



IMG_2455



IMG_2456



IMG_2457



IMG_2458



IMG_2459



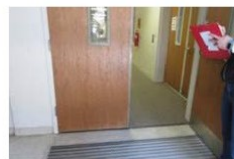
IMG_2460



IMG_2461



IMG_2463



IMG_2464



IMG_2465



IMG_2466



IMG_2467



IMG_2471



IMG_2472



IMG_2473



IMG_2474



IMG_2475



IMG_2477



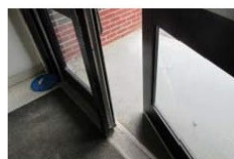
IMG_2479



IMG_2480



IMG_2481



IMG_2482



IMG_2487



IMG_2490



IMG_2491



IMG_2493



IMG_2496



IMG_2498



IMG_2499



IMG_2501



IMG_2504



IMG_2505



IMG_2506



IMG_2507



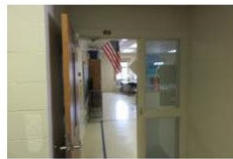
IMG_2508



IMG_2512



IMG_2515



IMG_2520



IMG_2526



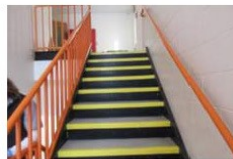
IMG_2528



IMG_2529



IMG_2530



IMG_2531



IMG_2532



IMG_2533



IMG_2535



IMG_2536



IMG_2537



IMG_2538



IMG_2539

Goddard Park



IMG_3633



IMG_3630



IMG_3631



IMG_3632

Holtshire Cemetery



IMG_3693



IMG_3692

Mattawa Beach



IMG_3689



IMG_3687



IMG_3688

Muzzey Field



IMG_3680



IMG_3681



IMG_3682



IMG_3667



IMG_3668



IMG_3670



IMG_3671



IMG_3672



IMG_3673



IMG_3674



IMG_3675



IMG_3676



IMG_3677



IMG_3678



IMG_3679

Moore-Leland Library



IMG_3600



IMG_3601



IMG_3602



IMG_3604



IMG_3605



IMG_3606



IMG_3607



IMG_3608



IMG_3609



IMG_3611



IMG_3612



IMG_3613



IMG_3587



IMG_3588



IMG_3589



IMG_3590



IMG_3591



IMG_3592



IMG_3593



IMG_3594



IMG_3595



IMG_3596



IMG_3597



IMG_3598



IMG_3599

North Orange Cemetery



IMG_3584



IMG_3586

Police Station



IMG_3472



IMG_3473



IMG_3474



IMG_3475



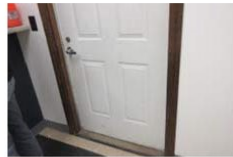
IMG_3407



IMG_3408



IMG_3409



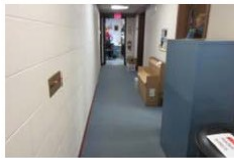
IMG_3410



IMG_3412



IMG_3416



IMG_3419



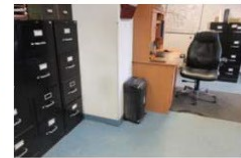
IMG_3424



IMG_3427



IMG_3428



IMG_3430



IMG_3431



IMG_3434



IMG_3435



IMG_3436



IMG_3437



IMG_3438



IMG_3440



IMG_3441



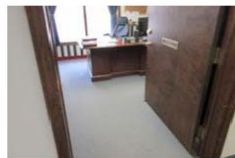
IMG_3442



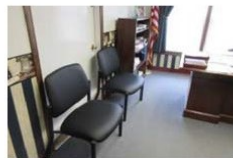
IMG_3443



IMG_3444



IMG_3445



IMG_3446



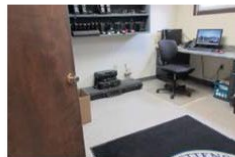
IMG_3447



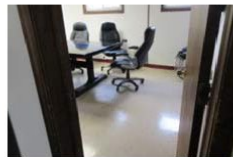
IMG_3448



IMG_3449



IMG_3450



IMG_3451



IMG_3452



IMG_3455



IMG_3456



IMG_3458



IMG_3459



IMG_3460



IMG_3461



IMG_3465



IMG_3466



IMG_3467



IMG_3468



IMG_3469



IMG_3470



IMG_3471

Parking Lot on East Main Street



IMG_3236



IMG_3237



IMG_3232



IMG_3233



IMG_3235

Riverfront Park



IMG_2916



IMG_2917



IMG_2918



IMG_2919



IMG_2920



IMG_2921



IMG_2922



IMG_2923



IMG_2924



IMG_2925



IMG_2911



IMG_2912



IMG_2913



IMG_2914



IMG_2915

South Cemetery



IMG_3303



IMG_3301



IMG_3302

Athol Mahar Sports Fields



IMG_3292



IMG_3285



IMG_3286



IMG_3288



IMG_3289

Town Hall



IMG_2885



IMG_2886



IMG_2887



IMG_2889



IMG_2890



IMG_2892



IMG_2893



IMG_2895



IMG_2896



IMG_2897



IMG_2898



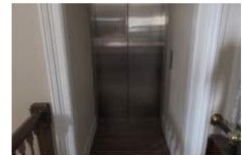
IMG_2899



IMG_2900



IMG_2902



IMG_2903



IMG_2905



IMG_2791



IMG_2792



IMG_2793



IMG_2794



IMG_2795



IMG_2796



IMG_2797



IMG_2798



IMG_2799



IMG_2800



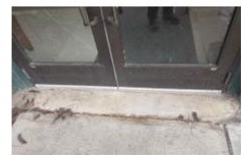
IMG_2801



IMG_2802



IMG_2803



IMG_2804



IMG_2805



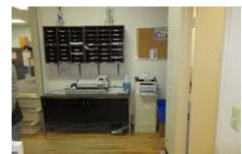
IMG_2806



IMG_2807



IMG_2808



IMG_2809



IMG_2811



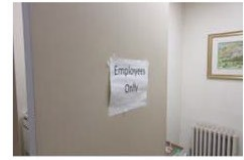
IMG_2812



IMG_2813



IMG_2814



IMG_2815



IMG_2816



IMG_2817



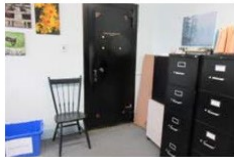
IMG_2818



IMG_2819



IMG_2820



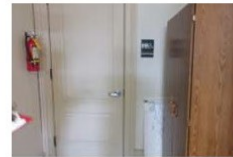
IMG_2821



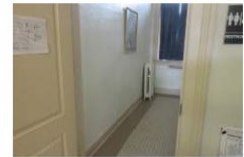
IMG_2822



IMG_2823



IMG_2824



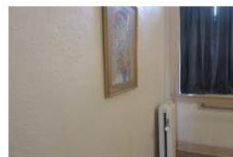
IMG_2825



IMG_2826



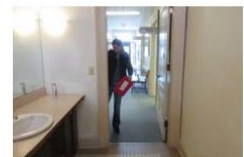
IMG_2827



IMG_2828



IMG_2829



IMG_2830



IMG_2831



IMG_2832



IMG_2833



IMG_2834



IMG_2835



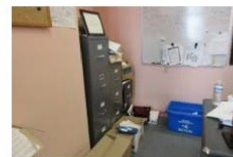
IMG_2837



IMG_2838



IMG_2839



IMG_2840



IMG_2841



IMG_2842



IMG_2843



IMG_2844



IMG_2845



IMG_2846



IMG_2847



IMG_2848



IMG_2849



IMG_2851



IMG_2852



IMG_2853



IMG_2854



IMG_2855



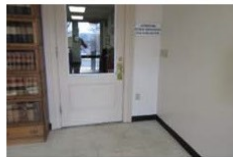
IMG_2856



IMG_2857



IMG_2858



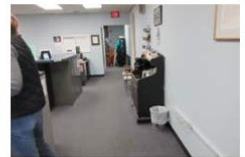
IMG_2859



IMG_2860



IMG_2861



IMG_2863



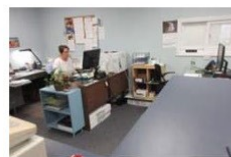
IMG_2865



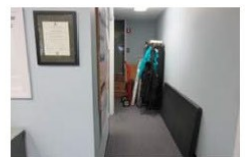
IMG_2867



IMG_2868



IMG_2869



IMG_2870



IMG_2871



IMG_2872



IMG_2873



IMG_2876



IMG_2877



IMG_2878



IMG_2879



IMG_2880



IMG_2881



IMG_2882



IMG_2883



IMG_2884

Transfer Station



IMG_3131



IMG_3132



IMG_3133



IMG_3134



IMG_3135



IMG_3136



IMG_3137



IMG_3138



IMG_3139



IMG_3140



IMG_3142



IMG_3143



IMG_3122



IMG_3123



IMG_3124



IMG_3125



IMG_3126



IMG_3127



IMG_3128



IMG_3129



IMG_3130

Veteran's Park



IMG_3111



IMG_3112



IMG_3113



IMG_3114



IMG_3115



IMG_3116



IMG_3117



IMG_3118



IMG_3119



IMG_3120



IMG_3121



IMG_3105



IMG_3106



IMG_3108



IMG_3109

Wastewater Treatment Facility



IMG_3220



IMG_3221



IMG_3222



IMG_3223



IMG_3224



IMG_3225



IMG_3226



IMG_3227



IMG_3228



IMG_3230



IMG_3231



IMG_3214



IMG_3215



IMG_3216



IMG_3217



IMG_3218



IMG_3219

Water Department



IMG_3654



IMG_3655



IMG_3656



IMG_3657



IMG_3658



IMG_3659



IMG_3660



IMG_3661



IMG_3662



IMG_3663



IMG_3664



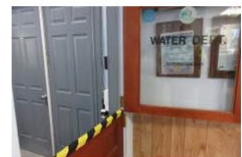
IMG_3665



IMG_3666



IMG_3634



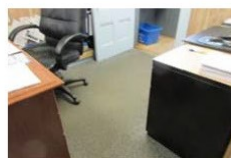
IMG_3635



IMG_3636



IMG_3637



IMG_3638



IMG_3639



IMG_3640



IMG_3641



IMG_3642



IMG_3643



IMG_3644



IMG_3645



IMG_3646



IMG_3648



IMG_3649



IMG_3650



IMG_3651



IMG_3652



IMG_3653

Wheeler Memorial Library



IMG_3202



IMG_3204



IMG_3205



IMG_3207



IMG_3208



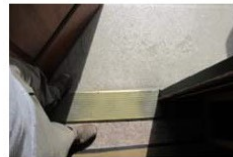
IMG_3209



IMG_3211



IMG_3212



IMG_3213



IMG_3144



IMG_3145



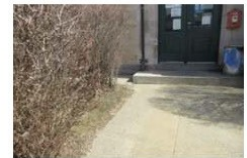
IMG_3146



IMG_3147



IMG_3148



IMG_3149



IMG_3150



IMG_3151



IMG_3152



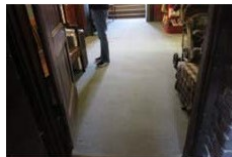
IMG_3155



IMG_3156



IMG_3158



IMG_3159



IMG_3160



IMG_3163



IMG_3165



IMG_3166



IMG_3167



IMG_3168



IMG_3169



IMG_3170



IMG_3171



IMG_3172



IMG_3173



IMG_3174



IMG_3175



IMG_3176



IMG_3177



IMG_3178



IMG_3179



IMG_3180



IMG_3181



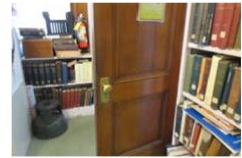
IMG_3182



IMG_3183



IMG_3184



IMG_3187



IMG_3188



IMG_3189



IMG_3190



IMG_3192



IMG_3194



IMG_3196



IMG_3197



IMG_3198



IMG_3200



IMG_3201